

Enterokinase, Light Chain, human recombinant

CATALOG #:	7529-10	10 µg
	7529-50	50 µg
	7529-500	500 µg
ALTERNATE NAMES:	Enteropeptidase, Serine protease 7, Transmembrane protease serine 15	
SOURCE:	<i>E.Coli</i>	
PURITY:	≥90% by SDS-PAGE and SEC analyses	
MOL. WEIGHT:	26.3 kDa	
FORM:	Liquid	
FORMULATION:	0.5 mg/ml in 25 mM Tris, 50 mM NaCl (pH 8.0) containing 50% glycerol.	

STORAGE CONDITIONS: Stable for 1 year when stored at -80°C . Use as provided, or dilute to 0.1-0.2 mg/ml with 25 mM Tris, 50 mM NaCl (pH 8.0) containing 50% glycerol. Aliquot and store at -80°C . Avoid repeated freeze and thaw cycles as this may reduce its overall activity over time.

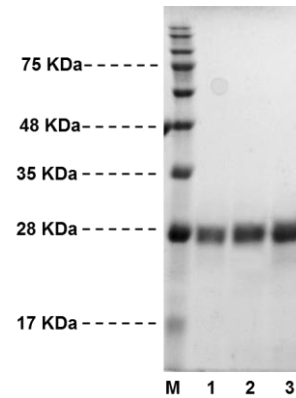
ACTIVITY ASSAY: BioVision's Enterokinase, Light Chain, has been tested for its ability to cleave a fluorogenic substrate Ac-DDDDK-AFC (Catalog # K758-100).

SPECIFIC ACTIVITY: >12,000 mU/mg (1 U = Cleavage of 1 µmole per min of Ac-DDDDK-AFC at 37°C in 50 mM Tris, 1 mM CaCl_2 , 0.1% Tween 20, pH 8.0).

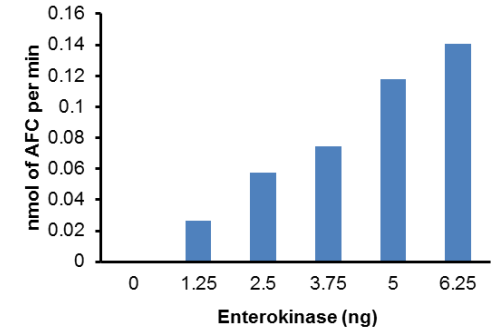
DESCRIPTION: Enterokinase (EC 3.4.21.9) is a serine protease involved in the activation of trypsinogen to trypsin, which in turn results in the activation of various digestive enzymes. It recognizes a highly specific amino acid sequence 'DDDDK' and cleaves after the lysine residue. High specific activity of enterokinase has been utilized in cleaving a variety of native or fusion protein tags containing the above recognition motif.

INHIBITORS: Enterokinase is inhibited in the presence of the protease inhibitors, such as Aprotinin, PMSF and benzamidine. Excess amount of imidazole (>50 mM) and/or NaCl (>250 mM) reversibly interferes and inhibits enterokinase activity.

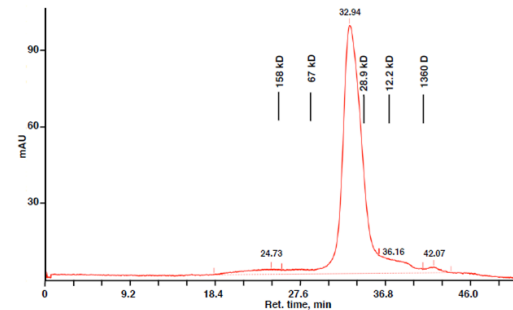
APPLICATIONS: Recombinant Enterokinase can be used for protein digestion, protein



SDS-PAGE (12%) of h-Enterokinase:
M: Protein Marker
1: h-Enterokinase (6 µg)
2: h-Enterokinase (9 µg)
3: h-Enterokinase (12 µg)



Activity of h-Enterokinase was measured by Enterokinase Activity Assay Kit (K758-100).



SEC analysis of h-Enterokinase using a Superdex 200 HR 10/30 column at 0.5 ml/min in 50 mM Tris and 0.25 M NaCl pH 7.6.

RELATED PRODUCTS:

- Enterokinase, human recombinant, lyophilized (**Cat. No. 7136-10, 50**)
- Enterokinase Activity Fluorometric Assay Kit (**Cat. No. K758-100**)
- Enterokinase Inhibitor Screening Kit (**Cat. No. K759-100**)
- Enterokinase Cleavage Kit (**Cat. No. K760-100**)
- Trypsin, Human Pancreas (**Cat. No. 7292- 50**)

FOR RESEARCH USE ONLY! Not to be used in humans.