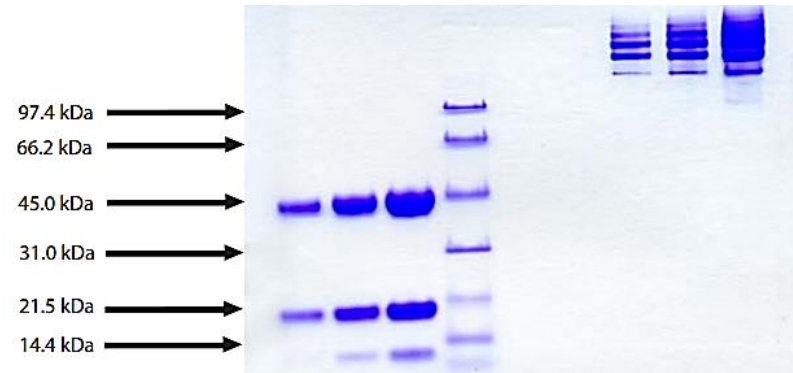


Haptoglobin, Human Plasma (Mixed Type)

CATALOG #:	7535-1	1 mg
ALTERNATE NAMES:	Haptoglobin b-Chain, haptoglobin a-chain; Hp; Bp	
SOURCE:	Human Plasma. Prepared from plasma shown to be non-reactive for HBsAg, anti-HCV, anti-HBc, and negative for anti-HIV 1 & 2 by FDA approved tests.	
MOL. WEIGHT:	Hp 1-1: 86 kDa; Hp 2-1: 200 kDa; Hp 2-2: 400 kDa	
PURITY:	≥ 95% by SDS-PAGE;	
EXTINCTION COEFFICIENT:	1.20	
FORM:	Lyophilized	
FORMULATION:	Salt-free lyophilized solid	
STORAGE CONDITIONS:	Store at -20°C or lower. Avoid repeated freezing and thawing cycles.	

DESCRIPTION: An acute-phase plasma protein found in human plasma at 100-300 mg per 100 ml. Binds hemoglobin, thus preventing loss of iron through the kidneys. Humans are polymorphic for haptoglobin, with three major phenotypes: Hp 1-1, Hp 2-1, and Hp 2-2. While the phenotypic distribution can vary greatly between ethnicities and geographic location, the Hp 2-1 phenotype is the most prevalent phenotype in humans. Plasma concentrations of haptoglobin are highest in individuals with Hp 1-1, intermediate in Hp 2-1 individuals, and lowest in Hp 2-2 individuals. Hp 1-1 is the most effective at binding hemoglobin, and Hp 2-2 is the least effective. This functional difference may be associated with the frequency and severity of epilepsy attacks, as researchers have found a correlation between recurring seizures and the Hp 2-2 phenotype.



Haptoglobin, Human Plasma (Mixed Type)

1. Haptoglobin - 5 µg (reduced / heated)
2. Haptoglobin - 10 µg (reduced / heated)
3. Haptoglobin - 20 µg (reduced / heated)
4. LMW Standard
5. Haptoglobin - 5 µg (non-reduced / no heat)
6. Haptoglobin - 10 µg (non-reduced / no heat)
7. Haptoglobin - 20 µg (non-reduced / no heat)

RELATED PRODUCTS:

- Haptoglobin, Phenotype 1-1, Human Plasma (**Cat. No. 7536-1**)
- Haptoglobin, Phenotype 2-2, Human Plasma (**Cat. No. 7537-1**)

FOR RESEARCH USE ONLY! Not to be used in humans.

