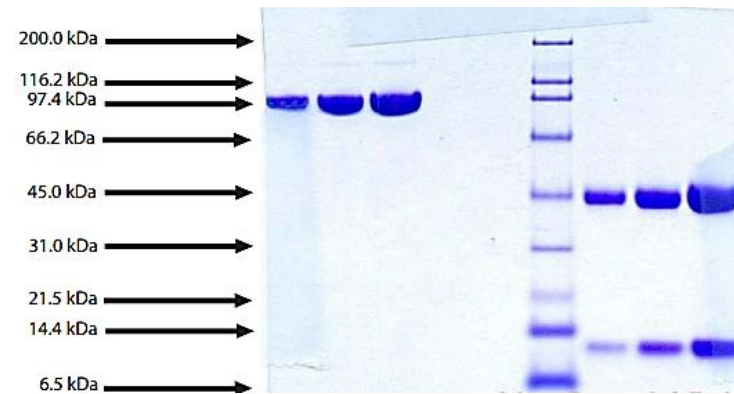


Haptoglobin, (Phenotype 1-1) Human Plasma

CATALOG #:	7536-1	1 mg
ALTERNATE NAMES:	Hp 1-1	
SOURCE:	Human Plasma. Prepared from plasma shown to be non-reactive for HBsAg, anti-HCV, anti-HBc, and negative for anti-HIV 1 & 2 by FDA approved tests.	
MOL. WEIGHT:	86 kDa	
PURITY:	≥ 95% by SDS-PAGE; No visible alpha-2 light chain	
EXTINCTION COEFFICIENT:	1.20	
FORM:	Lyophilized	
FORMULATION:	Salt-free lyophilized solid	
STORAGE CONDITIONS:	Store at -20°C or lower. Avoid repeated freezing and thawing cycles.	
DESCRIPTION:	Of the three haptoglobin phenotypes, Hp 1-1 is the most effective in binding free hemoglobin and in suppressing the inflammatory responses associated with free hemoglobin. Hp 1-1 protects against vascular complications in diabetes, is associated with sickle cell anemia, and is more common than other phenotypes in cases of cirrhosis. Individuals who are phenotype 1-1 have the highest concentration of haptoglobin in plasma.	



Haptoglobin, (Phenotype 1-1) Human Plasma

4-12% Bis-Tris-HCl NuPAGE gel

1. Haptoglobin - 5 µg (non-reduced / no heat)
2. Haptoglobin - 10 µg (non-reduced / no heat)
3. Haptoglobin - 20 µg (non-reduced / no heat)
4. BMW Standard
5. Haptoglobin - 5 µg (reduced / heated)
6. Haptoglobin - 10 µg (reduced / heated)
7. Haptoglobin - 20 µg (reduced / heated)

RELATED PRODUCTS:

- Haptoglobin, Human Plasma (Mixed type) (Cat. No. 7535-1)
- Haptoglobin, Phenotype 2-2, Human Plasma (Cat. No. 7537-1)

FOR RESEARCH USE ONLY! Not to be used in humans.