

# Haptoglobin, (Phenotype 2-2) Human Plasma

**CATALOG NO:** 7537-1 1 mg

**ALTERNATE NAMES:** Hp 2-2

**SOURCE:** Human Plasma. Prepared from plasma shown to be non-reactive for HBsAg, anti-HCV, anti-HBc, and negative for anti-HIV 1 & 2 by FDA approved tests.

**MOL. WEIGHT:** 170-900 kDa

**PURITY:** ≥ 95% by SDS-PAGE; No visible alpha-1 light chain

**EXTINCTION COEFFICIENT:** 1.20

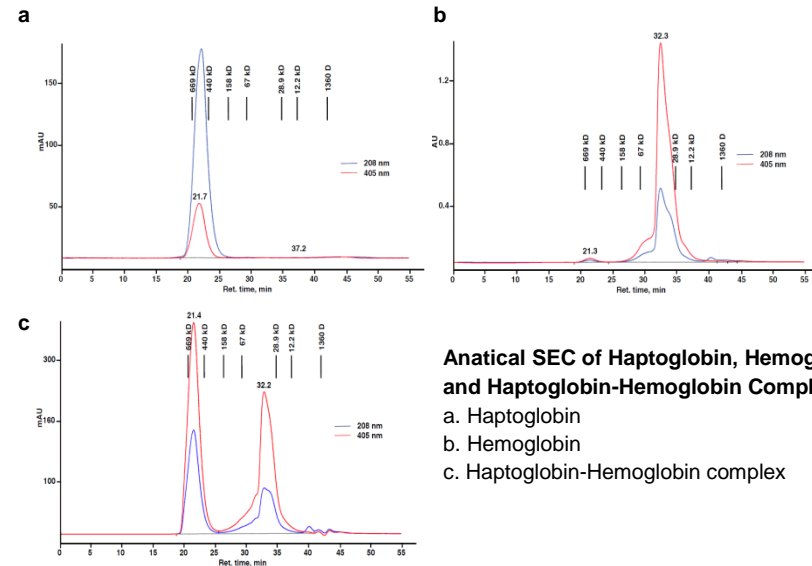
**FORM:** Lyophilized

**FORMULATION:** Salt-free lyophilized solid

**STORAGE CONDITIONS:** Store at -20°C or lower. Avoid repeated freezing and thawing cycles.

**DESCRIPTION:** Haptoglobin 2-2 (Hp 2-2) is the least effective of the three haptoglobin phenotypes in binding free hemoglobin and therefore provides less antioxidant benefits than Hp 1-1. Hp 2-2 is associated with renal failure, familial epilepsy, hypertension, atherosclerosis and coronary heart diseases. Individuals who are phenotype 2-2 have the lowest concentration of haptoglobin in plasma.

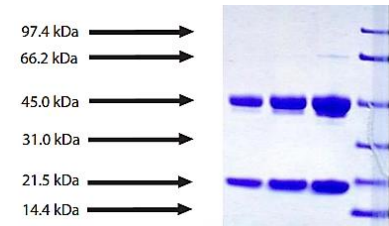
**BIOLOGICAL ACTIVITY:** The binding ability of haptoglobin is determined by analytical size exclusion chromatography of the hemoglobin-haptoglobin complex. One milligram of haptoglobin can bind one milligram of hemoglobin under the analysis conditions.



**Analytical SEC of Haptoglobin, Hemoglobin and Haptoglobin-Hemoglobin Complex,**  
 a. Haptoglobin  
 b. Hemoglobin  
 c. Haptoglobin-Hemoglobin complex

**Haptoglobin, (Phenotype 2-2) Human Plasma**

- 4-12% Bis-Tris-HCl NuPAGE gel
1. Haptoglobin - 5 µg (reduced / heated)
  2. Haptoglobin - 10 µg (reduced / heated)
  3. Haptoglobin - 20 µg (reduced / heated)
  4. LMW Standard



**RELATED PRODUCTS:**

- Haptoglobin, Human Plasma (Mixed type) (Cat. No. 7535-1)
- Haptoglobin, Phenotype 1-1, Human Plasma (Cat. No. 7536-1)

**FOR RESEARCH USE ONLY! Not to be used in humans.**

