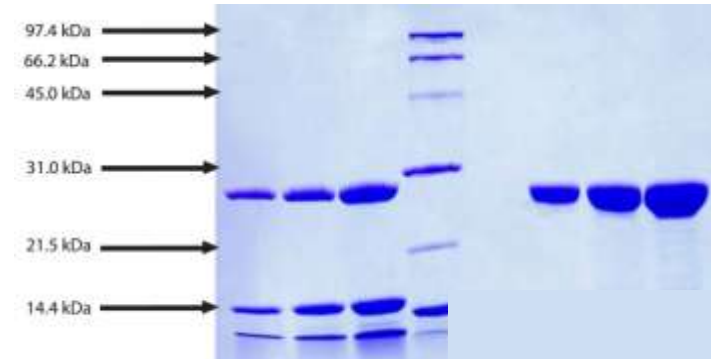


Chymotrypsin, Human Pancreas

CATALOG #:	7538-100	100 µg
ALTERNATE NAMES:	Caldecrin, Chymotrypsin C, Chymotrypsin-C, Chymotrypsin C, CLCR, CTRC, CTRC_HUMAN, ELA 4, ELA4, Elastase 4, Elastase IV, Elastase4, Elastase IV, Serum calcium decreasing factor	
SOURCE:	Human Pancreas. Prepared from tissue shown to be non-reactive for HbsAG, anti-HCV, anti-HBc, and negative for anti-HIV 1 & 2 by FDA approved tests.	
MOL. WEIGHT:	25.0 kDa	
PURITY:	≥ 95% by SDS-PAGE; shows no trypsin activity when assayed against N α -benzoyl-L-arginine-p-nitroanilide.	
ACTIVITY:	40-70 units per mg protein. One unit is defined as the amount of enzyme that hydrolyzes one µmole of Suc-Ala-Ala-Pro-Phe-pNA/min at 21°C, pH 8.0.	
EXTINCTION COEFFICIENT:	1.9	
FORM:	Lyophilized	
FORMULATION:	Salt-free lyophilized solid	
STORAGE CONDITIONS:	Store at -20°C or lower. Avoid repeated freezing and thawing cycles.	
DESCRIPTION:	Chymotrypsin is a serine peptidase and has 241 amino acid residues contained in three polypeptide chains (A chain-13 residues, B chain-131 residues, and C chain-97 residues) linked by disulfide bridges. Molecular weight of this enzyme is found to be 25 kDa. The pI is 8.75. It selectively hydrolyzes peptide bonds on the C-terminal side of tyrosine, phenylalanine, tryptophan, and leucine.	



Chymotrypsin, Human Pancreas

1. Chymotrypsin - 5 µg (reduced / heated)
2. Chymotrypsin - 10 µg (reduced / heated)
3. Chymotrypsin - 20 µg (reduced / heated)
4. LMW Standard
5. Chymotrypsin - 5 µg (non-reduced / no heat)
6. Chymotrypsin - 10 µg (non-reduced / no heat)
7. Chymotrypsin - 20 µg (non-reduced / no heat)

RELATED PRODUCTS:

- Alpha 1 Antichymotrypsin, Human Plasma (**Cat. No. 7293-100**)
- Trypsin Activity Colorimetric Assay Kit (**Cat. No. K771-100**)
- Trypsin, Human pancreas (**Cat. No. 7292-50**)
- Alpha 1 Antitrypsin, Human Plasma (**Cat. No. 7294-1000**)
- Serpin E1/PAI-1, human recombinant, (**Cat. No. 4731-10, -100, -1000**)
- Human CellExp™ SERPINA1 /A1AT, human recombinant, (**Cat. No. 7235-10**)
- Serpin A6 Antibody (**Cat. No. 3906-100**)
- Serpin A6 Blocking Peptide (**Cat. No. 3906BP-100**)
- Neuroserpin, human recombinant, (**Cat. No. 7181-10, -50**)

FOR RESEARCH USE ONLY! Not to be used in humans.