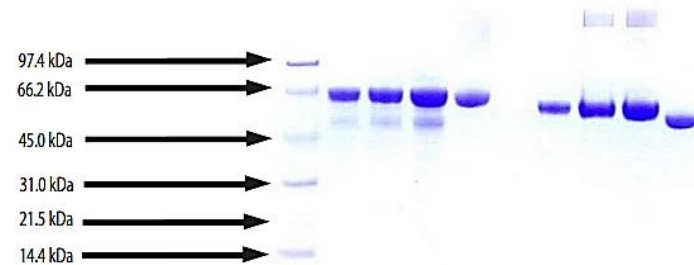


Hemopexin, Human Plasma

CATALOG #:	7544-1000	1 mg
ALTERNATE NAMES:	Beta-1B-glycoprotein, HPX	
SOURCE:	Human Plasma. Prepared from plasma shown to be non-reactive for HBsAg, anti-HCV, anti-HBc, and negative for anti-HIV 1 & 2 by FDA approved tests.	
PURITY:	≥ 95% by SDS-PAGE	
MOL. WEIGHT:	57.0 kDa	
EXTINCTION COEFFICIENT:	1.97	
FORM:	Lyophilized	
FORMULATION:	Lyophilized from 11.9 mM phosphate, 137 mM NaCl, 2.7 mM KCl, pH 7.4.	
STORAGE CONDITIONS:	Store at -20°C or lower. Avoid repeated freezing and thawing cycles.	

DESCRIPTION: Hemopexin is a single-chain protein belonging to the family of blood transport proteins. It binds to heme released into the bloodstream during the degradation process. Recent studies have demonstrated that hemopexin acts as an extracellular antioxidant against hemoglobin-mediated damage in inflammation. Hemopexin protects against heme toxicity and conserves and recycles iron. Abnormal levels of hemopexin are associated with hemolytic anemia, chronic neuromuscular disease, and acute intermittent porphyria.



Hemopexin, Human Plasma

4-12% Bis-Tris NuPAGE gel

1. LMW Standard
2. Hemopexin - 5 µg (Reduced/heat)
3. Hemopexin - 10 µg (Reduced/heat)
4. Hemopexin - 20 µg (Reduced/heat)
5. Albumin Control (Reduced/heat)
6. Hemopexin - 5 µg (Non-reduced/no heat)
7. Hemopexin - 10 µg (Non-reduced/no heat)
8. Hemopexin - 20 µg (Non-reduced/no heat)
9. Albumin Control (Non-reduced/no heat)

RELATED PRODUCTS:

- Hemopexin, Rat Plasma (**Cat # 7545-100**)
- Heme Colorimetric Assay Kit (**Cat # K672-100**)
- Heme Oxygenase-1 Antibody (**Cat # 3391-100**)
- Heme Oxygenase-2 Antibody (**Cat # 3392-100**)

FOR RESEARCH USE ONLY! Not to be used in humans.