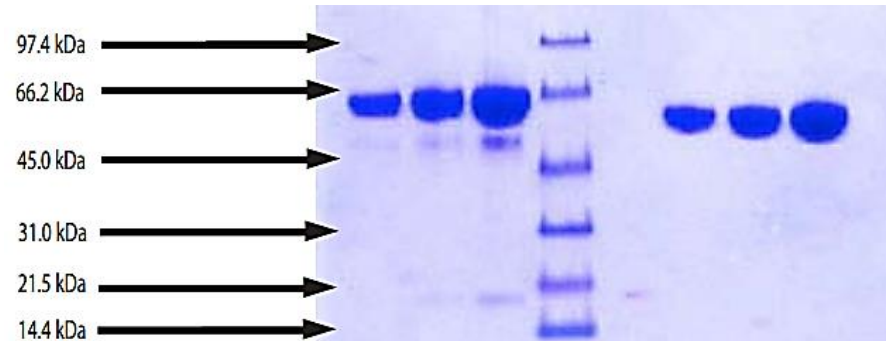


# Hemopexin, Rat Serum

<b>CATALOG #:</b>	7545-100	100 µg
<b>ALTERNATE NAMES:</b>	Beta-1B-glycoprotein, HPX	
<b>SOURCE:</b>	Rat Serum.	
<b>PURITY:</b>	≥ 95% by SDS-PAGE	
<b>MOL. WEIGHT:</b>	57.0 kDa	
<b>EXTINCTION COEFFICIENT:</b>	1.97	
<b>FORM:</b>	Lyophilized	
<b>FORMULATION:</b>	Lyophilized from 11.9 mM phosphate, 137 mM NaCl, 2.7 mM KCl, pH 7.4.	
<b>STORAGE CONDITIONS:</b>	Store at -20°C or lower. Avoid repeated freezing and thawing cycles.	
<b>DESCRIPTION:</b>	Hemopexin is a single-chain protein belonging to the family of blood transport proteins. It binds to heme released into the bloodstream during the degradation process. Recent studies have demonstrated that hemopexin acts as an extracellular antioxidant against hemoglobin-mediated damage in inflammation. Hemopexin protects against heme toxicity and conserves and recycles iron. Abnormal levels of hemopexin are associated with hemolytic anemia, chronic neuromuscular disease, and acute intermittent porphyria.	



## Hemopexin, Rat Plasma

4-12% Bis-Tris NuPAGE gel

1. Hemopexin Rat - 5 µg (Reduced/heat)
2. Hemopexin Rat - 10 µg (Reduced/heat)
3. Hemopexin Rat - 20 µg (Reduced/heat)
4. LMW Standard
5. Hemopexin Rat - 5 µg (Non-reduced/no heat)
6. Hemopexin Rat - 10 µg (Non-reduced/no heat)
7. Hemopexin Rat - 20 µg (Non-reduced/no heat)

## RELATED PRODUCTS:

- Hemopexin, Human Plasma (**Cat # 7544-1000**)
- Heme Colorimetric Assay Kit (**Cat # K672-100**)
- Heme Oxygenase-1 Antibody (**Cat # 3391-100**)
- Heme Oxygenase-2 Antibody (**Cat # 3392-100**)

**FOR RESEARCH USE ONLY! Not to be used in humans.**