

Active Recombinant Human CETP

CATALOG #:	7606-20	20 µg
	7606-100	100 µg
	7606-1000	1 mg
SOURCE:	Insect Cells	
PURITY:	≥90% by SDS-PAGE	
MOL. WEIGHT:	55 kDa	
FORMULATION:	Lyophilized from a Buffer containing 10 mM Tris and 150 mM NaCl.	
RECONSTITUTION:	Reconstitute in sterile water at 2 mg/ml.	
STORAGE CONDITIONS:	Stable for 1 year at -20°C. Avoid multiple freeze/thaw cycles as activity may decrease.	

DESCRIPTION:

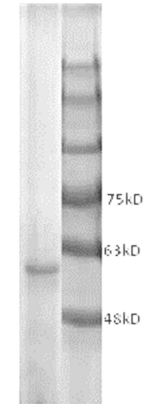
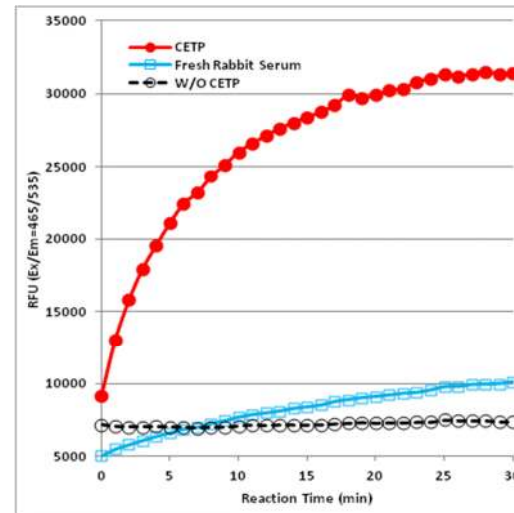
Cholesteryl ester transfer protein (CETP), also called plasma lipid transfer protein, is a plasma protein that facilitates the transport of cholesteryl esters and triglycerides between the lipoproteins. It collects triglycerides from very-low-density (VLDL) or low-density lipoproteins (LDL) and exchanges them for cholesteryl esters from high-density lipoproteins (HDL), and vice versa. Inhibition of CETP has been proposed as a strategy to raise HDL cholesterol levels, a potential approach to retarding atherogenesis and a strategy to reduce cardiovascular risk.

APPLICATION AND USAGE:

Active CETP is useful as standard in CETP activity assay, studying CETP regulation, determining target substrates, screening CETP inhibitors, performing structure-activity relationship (SAR) studies, etc. We recommend using 5-10 µg protein per assay for analyzing CETP activity.

BIOLOGICAL ACTIVITY:

The CETP Activity Assay uses a donor molecule containing a fluorescent self-quenched neutral lipid that is transferred to an acceptor molecule in the presence of CETP. CETP-mediated transfer of the fluorescent neutral lipid to the acceptor molecule results in an increase in fluorescence (Ex/Em: 465/535 nm).



CETP Activity Assay: The CETP activity was detected with CETP Activity Assay Kit (Biovision Cat. No. K601-100) with 8 µg of protein CETP in the buffer 10 mM Tris, pH 7.5, 150 mM NaCl, 2 mM EDTA. The fresh rabbit serum (3 µl) and non-CETP background were used as positive and negative controls, respectively.

RELATED PRODUCTS:

- CETP Activity Assay Kit (**Cat. No. K601-100**)
- CETP Drug Screening Kit (**Cat. No. K602-100**)
- CETP Antibody (**Cat. No. 3413-100**)
- CETP Blocking Peptide (**Cat. No. 3413BP-50**)

FOR RESEARCH USE ONLY! Not to be used on humans.