

Sushi Peptide S3, Bacterial recombinant

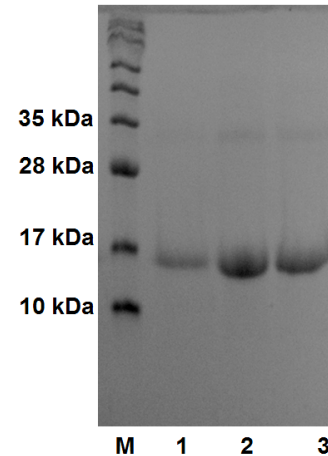
CATALOG #:	7611-20	20 µg
	7611-100	100 µg
	7611-1000	1 mg
ALTERNATE NAMES:	Factor C Sushi 3, Sushi 3	
SOURCE:	<i>E. coli</i>	
PURITY:	≥90% by SDS-PAGE	
MOL. WEIGHT:	16.1 kDa (145 aa, 268-301 aa + NT- His Tag)	
FORMULATION:	Lyophilized from 50 mM Tris. HCl and 100 mM NaCl (pH 8.0).	
RECONSTITUTION:	Reconstitute with water. Recommended conc: 0.1 - 1 mg/ml.	
STORAGE CONDITIONS:	Stable for 1 year at -20°C. Avoid multiple Freeze / thaw cycles as activity may decrease.	

DESCRIPTION:

Biovision's Sushi Peptide S3 is a trimer of one of the high endotoxin-binding domains, Sushi 3 (or S3) within Factor C, a lipopolysaccharide (LPS)-sensitive serine protease of the horseshoe crab (*Limulus Polyphemus*). S3 display detergent-like properties in disrupting LPS aggregates, with specificity for palmitoyl-oleoyl-phosphatidylglycerol (POPG) resulting from electrostatic and hydrophobic forces between the peptides and the bacterial lipids. The unsaturated nature of POPG confers fluidity and enhances insertion of the peptides into the lipid bilayer, causing maximal disruption of the bacterial membrane. In short, peptide S3 can bind to lipopolysaccharide (LPS) and inhibit the growth of Gram-negative bacteria without affecting mammalian cells. It has been shown that endotoxin activates Factor C-based catalytic coagulation cascade resulting in the gelation of *Limulus* blood. This process is the basis of *Limulus* Amebocyte Lysate (LAL) endotoxin detection method.

APPLICATION AND USAGE:

Sushi peptide S3 is useful in binding to endotoxins in mammalian cell culture systems.



SDS-PAGE (15%) of purified Sushi Peptide S3:
 Lane 1: Protein Marker
 Lane 2: 20 ug Sushi Peptide S3
 Lane 3: 30 ug Sushi Peptide S3
 Lane 4: 40 ug Sushi Peptide S3

RELATED PRODUCTS:

- Apoptosis Detection Kits & Reagents
 - Annexin V Kits & Bulk Reagents
 - Caspase Assay Kits & Reagents
 - Mitochondrial Apoptosis Kits & Reagents
 - Nuclear Apoptosis Kits & Reagents
 - Apoptosis Inducers and Set
 - Apoptosis siRNA Vectors
- Cell Damage & Repair
 - HDAC Fluorometric & Colorimetric Assays & Drug Discovery Kits
 - HAT Colorimetric Assay Kit & Reagents
 - DNA Damage Quantification Kit
 - Glutathione & Nitric Oxide Fluorometric & Colorimetric Assay Kits
- Signal Transduction
 - cAMP & cGMP Assay Kits
 - Akt & JNK Activity Assay Kits
 - Beta-Secretase Activity Assay Kit
- Growth Factors and Cytokines

FOR RESEARCH USE ONLY! Not to be used on humans

