

Recombinant Human Bromodomain Testis-specific Protein (BrdT, domain 257-382 aa)

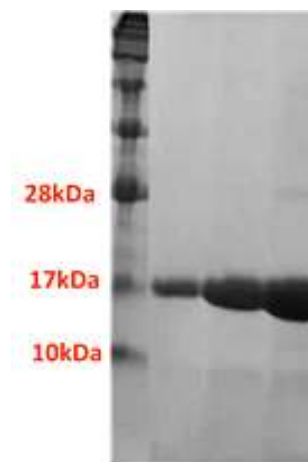
CATALOG #:	7642-20	20 µg
	7642-100	100 µg
	7642-1000	1 mg
SOURCE:	<i>E. coli</i>	
PURITY:	≥98% by SDS-PAGE	
MOL. WEIGHT:	14.9 kDa (126 aa, 257-382 aa + NT His Tag)	
FORMULATION:	rh-BrdT is supplied as a solution in 50 mM Tris, pH 8.0, 150 mM NaCl and 10% Glycerol.	
STORAGE CONDITIONS:	Stable for 1 year at –80°C. Avoid multiple freeze/thaw cycles as activity may decrease.	

DESCRIPTION:

BrdT is similar to the RING3 protein family. It possesses 2 bromodomain motifs and a PEST sequence. The bromodomain is found in proteins that regulate transcription. BrdT drives a meiotic and post-meiotic gene expression program. It also controls the genome-wide post-meiotic genome reorganization that occurs after histone hyperacetylation in elongating spermatids. It may play a role in the transcriptional regulation of spermatogenesis. It also seems to have a structural ATP-independent role in the reorganization of acetylated chromatin. BioVision's recombinant protein includes Bromo 1 domain (257-382 aa) with N-terminal His-tag.

APPLICATION AND USAGE:

BrdT is useful in studying bromodomain binding assays, screening inhibitors and selectivity profiling.



SDS-PAGE (15%) of purified BrdT protein:
Lane 1: Marker.
Lane 2: BrdT protein (257-382 aa) – 10 µg
Lane 3: BrdT protein (257-382 aa) – 25 µg
Lane 4: BrdT protein (257-382 aa) – 50 µg

RELATED PRODUCTS:

- Recombinant Human BrdT (22-138 aa) (Cat. No. 7641-20, 100, -1000)
- Recombinant Human BRD4 (Cat. No. 7644-20, 100, -1000)
- Human recombinant BRD1 bromodomain (Cat. No. 7645-20, 100)
- Human recombinant BRD2 bromodomains 1 (Cat. No. 7646-20, 100)
- Human recombinant BRD2 bromodomain 1 and 2 (Cat. No. 7647-20, 100)
- Human recombinant BRD2 bromodomain 2 (Cat. No. 7648-20, 100)
- Human recombinant BRD9 bromodomain (Cat. No. 7649-20, 100)
- Bromodomain Inhibitor, (+)-JQ1 (Cat. No. 2070-1, -5)
- BRD8 Antibody (Cat. No. 3738-100)
- BRD8 Antibody (Cat. No. 3506-100)
- BRD8 Blocking Peptide (Cat. No. 3506BP-50)
- EZSolution™ (+)-JQ1 (Cat. No. 2091-1)
- I-BET151 (Cat. No. 2220-1, -5)
- PFI-1 (Cat. No. 2203-1, -5)

FOR RESEARCH USE ONLY! Not to be used on humans.