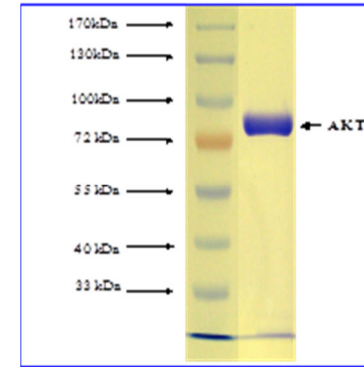


Active Akt1

CATALOG #:	7701-5 7701-100
LOT #:	----
SOURCE:	Sf 9 cells
PURITY:	4 µg of Akt1 protein was subjected to SDS-PAGE and Coomassie blue staining. The scan of the gel showed >90% purity of the Akt1 product, and the band was at ~85 kDa
SPECIFIC ACTIVITY:	124 nmol/min/mg
MOLECULAR WEIGHT:	~85 kDa.
PHYSICAL APPEARANCE:	Recombinant proteins in storage buffer (50 mM Tris-HCl, pH 7.5, 150 mM NaCl, 0.25 mM DTT, 0.1 mM EGTA, 0.1 mM EDTA, 0.1 mM PMSF, 25% glycerol).
STORAGE CONDITIONS:	Store product frozen at or below -70°C. Stable for 1 year at -70°C as undiluted stock. Aliquot to avoid repeated freeze/thaw.
BACKGROUND DESCRIPTION:	Akt1 or Protein Kinase B is a serine/threonine kinase that belongs to the Akt family. Akt1 is activated in cells in response to diverse stimuli such as hormones, growth factors and extracellular matrix components and is involved in glucose metabolism, transcription, survival, cell proliferation, angiogenesis, and cell motility. Akt also mediates many of the stimulatory effects of insulin on glucose metabolism through deactivation of glycogen synthase kinase, activation of phosphofructo-kinase, and modulation of glucose transporter activity. Akt1 plays an important role in cancer cell survival and proliferation thereby contributing to cancer progression. Recombinant full-length human Akt1 containing N-terminal GST tag was expressed by baculovirus in Sf 9 insect cells.
ACTIVITY:	124 nmol phosphate incorporated into Akt substrate peptide per minute per mg protein at 30°C for 15 minutes using a final concentration of 50 µM ATP and total of 0.83 µCi/µl P-32.
USAGE:	The product is intended for research use or for further manufacture use. The product is not intended for human or therapeutic use.

FOR RESEARCH USE ONLY! Not to be used in humans.



RELATED PRODUCTS:

- Akt activated cell lysate (**Cat. No. 7036-1**)
- Akt Inhibitor (**Cat. No. 1701-1**)
- Akt Inhibitor, Isozyme Selective (**Cat. No. 1708-1**)
- Akt negative control cell lysate (**Cat. No. 7035-1**)
- Active Akt2 (**Cat. No. 7702-5**)
- Active Akt3 (**Cat. No. 7703-5**)