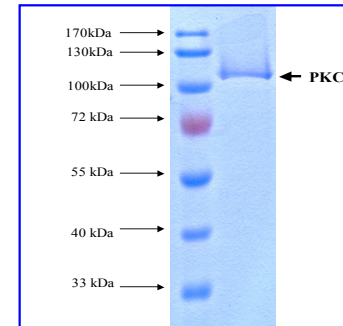


Active PKC α

CATALOG #:	7714-5
SOURCE:	Sf 9 cells
PURITY:	0.5 μ g of PKC α protein was subjected to SDS-PAGE and Coomassie blue staining. The scan of the gel showed >90% purity of the PKC α product, and the band was at ~103 kDa
SPECIFIC ACTIVITY:	69 nmol/min/mg
MOLECULAR WEIGHT:	~103 kDa.
FORMULATION:	Recombinant proteins in storage buffer (50 mM Tris-HCl, pH 7.5, 150 mM NaCl, 0.25 mM DTT, 0.1 mM EGTA, 0.1 mM EDTA, 0.1 mM PMSF, 25% glycerol).
STORAGE CONDITIONS:	Store product frozen at or below -70°C. Stable for 1 year at -70°C as undiluted stock. Aliquot to avoid repeated thawing and freezing.

BACKGROUND DESCRIPTION: Protein kinase C (PKC) is a family of serine- and threonine-specific protein kinases that can be activated by calcium and the second messenger diacylglycerol. PKC family members phosphorylate a wide variety of protein targets and are known to be involved in diverse cellular signaling pathways. PKC family members also serve as major receptors for phorbol esters, a class of tumor promoters. PKC-alpha has been reported to play roles in many different cellular processes, such as cell adhesion, cell transformation, cell cycle checkpoint, and cell volume control. Coussens defined a new family of PKC-related genes and termed alpha, beta, and gamma. Latos-Bielenska refined the assignment of PRKCA1 to 17q22-q23.2. Braz identified PKC-alpha as a fundamental regulator of cardiac contractility and Ca(2+) handling in myocytes in study of knockout mice. Recombinant full-length xenopus PKC α containing N-terminal GST tag was expressed by baculovirus in Sf 9 insect cells.

ACTIVITY: 69 nmol phosphate incorporated into CREBtide per minute per mg protein at 30°C for 15 minutes using a final concentration of 50 μ M ATP (0.83 μ Ci/assay).



PKC α Protein Gel

RELATED PRODUCTS:

- Active PKC iota (**Cat. No. 7705-5**)
- Active PKC epsilon (**Cat. No. 7753-5**)
- Active PKC eta (**Cat. No. 7731-5**)
- Active PKC mu (**Cat. No. 7745-5**)
- Active PKC zeta (**Cat. No. 7718-5**)
- Active PKC delta (**Cat. No. 7739-5**)
- Active PKC gamma (**Cat. No. 7764-5**)
- Active PKC β II (**Cat. No. 7704-5**)

FOR RESEARCH USE ONLY! Not to be used in humans.