

MET, Active

| | | |
|--------------------------|--|------|
| CATALOG NO: | 7771-5 | 5 µg |
| SOURCE: | Sf9 insect cells using baculovirus (958-end) | |
| PURITY: | >90% | |
| MOLECULAR WEIGHT: | 74kDa. | |
| FORM: | Liquid | |
| FORMULATION: | 50mM Tris-HCl, pH 7.5, 150mM NaCl, 10mM glutathione, 0.1mM EDTA, 0.25mM DTT, 0.1mM PMSF, 25% glycerol. | |

STORAGE CONDITIONS: Store product at -70°C . For optimal storage, aliquot target into smaller quantities after centrifugation and store at recommended temperature. For most favorable performance, avoid repeated handling and multiple freeze/thaw cycles.

DESCRIPTION:

MET is a proto-oncogene that encodes a transmembrane growth factor receptor which is a heterodimer of two disulphide linked chains of 50 kd (alpha) and 145 kd (beta). MET is widely expressed in the kidney, brain, lung, skin, and embryonic tissue. Hepatocyte growth factor (HGF) binds to MET and activates its tyrosine kinase activity. MET is overexpressed and activated in a variety of human cancers including pancreatic, colon, gastric, cervical and ovarian cancers and has been shown to be involved in tumor cell migration and invasion.

SPECIFIC ACTIVITY:

The specific activity of MET was determined to be 46 nmol /min/mg as per activity assay protocol.

ASSAY PROCEDURE:**Active Kinase**

Active MET (0.1µg/µl) diluted with Kinase Dilution Buffer and assayed as outlined in sample activity plot. (Note: these are suggested working dilutions and it is recommended that the researcher perform a serial dilution of Active MET for optimal results).

Kinase Dilution Buffer, pH 7.2

Kinase Assay Buffer II diluted at a 1:4 ratio (5X dilution) with 50 ng/µl BSA solution.

Kinase Assay Buffer II, pH 7.2

Buffer components: 25mM MOPS, 12.5mM µ-glycerol-phosphate, 20mM MgCl₂, 25mM MnCl₂, 5mM EGTA, 2mM EDTA. Add 0.25mM DTT to Kinase Assay Buffer prior to use.

[32P]-ATP Assay Cocktail

Prepare 250µM [32P]-ATP Assay Cocktail in a designated radioactive working area by adding the following components: 150µl of 10mM ATP Stock Solution, 100µl [32P]-ATP (1mCi/100µl), 5.75ml of Kinase Assay Buffer (Catalog #: K01-09). Store 1ml aliquots at -20°C .

10mM ATP Stock Solution

Prepare ATP stock solution by dissolving 55mg of ATP in 10ml of Kinase Assay Buffer. Store 200µl aliquots at -20°C .

Substrate

Poly (Glu:Tyr, 4:1) synthetic peptide substrate diluted in distilled H₂O to a final concentration of 1 mg/ml.

Assay Protocol

Step 1. Thaw [32P]-ATP Assay Cocktail in shielded container in a designated radioactive working area.

Step 2. Thaw the Active MET, Kinase Assay Buffer, Substrate and Enzyme Dilution Buffer on ice.

Step 3. In a pre-cooled microfuge tube, add the following reaction components bringing the initial reaction volume up to 20µl:

Component 1. 10µl of diluted Active MET.

Component 2. 10µl of 1mg/ml stock solution of substrate

Step 4. Set up the blank control as outlined in step 3, excluding the addition of the substrate. Replace the substrate with an equal volume of distilled H₂O.

Step 5. Initiate the reaction by the addition of 5µl [32P]-ATP Assay Cocktail bringing the final volume up to 25µl and incubate the mixture in a water bath at 30°C for 15 minutes.

Step 6. After the 15 minute incubation period, terminate the reaction by spotting 20µl of the reaction mixture onto individual pre-cut strips of phosphocellulose P81 paper.

Step 7. Air dry the pre-cut P81 strip and sequentially wash in a 1% phosphoric acid solution (dilute 10ml of phosphoric acid and make a 1L solution with distilled H₂O) with constant gentle stirring. It is recommended that the strips be washed a total of 3 intervals for approximately 10 minutes each.

Step 8. Count the radioactivity on the P81 paper in the presence of scintillation fluid in a scintillation counter.

Step 9. Determine the corrected cpm by removing the blank control value (see Step 4) for each sample and calculate the kinase specific activity as outlined below.

Calculation of [P32]-ATP Specific Activity (SA) (cpm/pmol)

Specific activity (SA) = cpm for 5µl [32P]-ATP / pmoles of ATP (in 5µl of a 250µM ATP stock solution, i.e., 1250 pmoles)

Kinase Specific Activity (SA) (pmol/min/µg or nmol/min/mg)

Corrected cpm from reaction / [(SA of 32P-ATP in cpm/pmol)*(Reaction time in min)*(Enzyme amount in µg or mg)]*[(Reaction Volume) / (Spot Volume)]

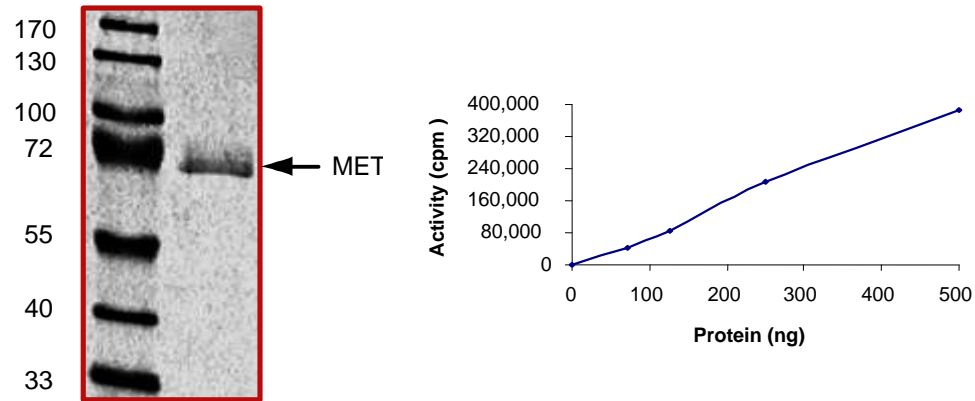


Fig. A. The purity was determined to be >90%. Approx. MW 74kDa.

Fig. B. The specific activity of MET was determined to be 46 nmol /min/mg as per activity assay protocol.

RELATED PRODUCTS:

- Human CellExp™ HGFR/c-MET, human recombinant (**Cat. No. 7393-20, -100**)
- Human CellExp™ HGF, Human Recombinant (**Cat # 6456-10, -50**)
- Human CellExp™ HGH, Human Recombinant (**Cat # 6457-10, -50**)
- HGF, human recombinant (**Cat # 4509-10, -1000**)
- HGF, human recombinant (**Cat # 4510-10, -50, -1000**)
- HGF, murine recombinant (**Cat # 7160-10, -50**)
- HGF (human) ELISA Kit (**Cat # K4781-100**)
- HGF (human) ELISA Kit (For Lysates) (**Cat # K4782-100**)