

# FBP1, human recombinant

<b>CATALOG #:</b>	7803-100	100 µg
<b>ALTERNATE NAMES:</b>	Fructose-1,6-bisphosphatase 1, FBPase1, FBP, FBP1	
<b>SOURCE:</b>	E. Coli	
<b>PURITY:</b>	> 90% by SDS - PAGE	
<b>MOL. WEIGHT:</b>	39.0 kDa (358 aa, 1-338 aa + His Tag)	
<b>FORM:</b>	Liquid	
<b>FORMULATION:</b>	1 mg/ml solution 20 mM Tris-HCl buffer, pH 8.0, 10% glycerol and 1 mM DTT.	

**STORAGE CONDITIONS:**

Can be stored at 4°C short term (1-2 weeks). For long term storage, aliquot and store at -20°C or -70°C. Avoid repeated freezing and thawing cycles.

**DESCRIPTION:**

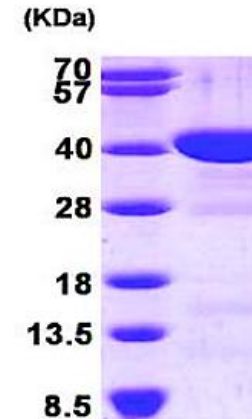
Fructose-1, 6-bisphosphatase 1 (FBP1) is a gluconeogenesis regulatory enzyme, catalyzes the hydrolysis of fructose 1, 6-bisphosphate to fructose 6-phosphate and inorganic phosphate. Fructose-1, 6-diphosphatase deficiency is associated with hypoglycemia and metabolic acidosis. Recombinant FBP1 protein, fused to His-tag at N-terminus, was expressed in E.Coli and purified by using conventional chromatography techniques.

**AMINO ACID SEQUENCE:**

MGSSHHHHHH SSGLVPRGSH MADQAPFDTD VNTLTRFVME EGRKARGTGE  
LTQLLNSLCT AVKAISSAVR KAGIAHLYGI AGSTNVTGDQ VKKLDVLSND LVMNMLKSSF  
ATCVLVSEED KHAIIVEPEK RGKYVVC FDP LDGSSNIDCL VSVGTIFGIY RKKSTDEPSE  
KDALQPGRNL VAAGYALYGS ATMLVLAMDC GVNCFMLDPA IGEFILVDKD VKIKKKGKIY  
SLNEGYARDF DPAVTEYIQR KKFPDINSAP YGARYVGS MV ADVHRTLVIY GIFYLPANKK  
SPNGKLRLLY ECNPMAYVME KAGGMATTGK EAVLDVIPTD IHQRAPVILG SPDDVLEFLK  
VYEKHSQAQ

**BIOLOGICAL ACTIVITY:**

Specific activity is > 0.30 unit/ml, in which one unit will convert 1.0 µmole of fructose 1, 6-diphosphate to fructose 6-phosphate and inorganic phosphate per minute at pH 9.5 at 25°C



15% SDS-PAGE (3ug)  
Human Recombinant FBP1

**RELATED PRODUCTS:**

- FBP2, human recombinant (Cat. No. 7804-100)
- Fructose Colorimetric/Fluorometric Assay Kit (Cat. No. K619-100)
- PicoProbe™ Fructose Fluorometric Assay Kit (Cat. No. K611-100)
- PicoProbe™ Fructose-6-Phosphate Fluorometric Assay Kit (Cat. No. K689-100)

**FOR RESEARCH USE ONLY! Not to be used in humans.**