

GOT2, human recombinant

CATALOG #:	7809-100	100 µg
ALTERNATE NAMES:	Aspartate aminotransferase 2, mitochondrial, KAT4, KATIV, mitAAT	
SOURCE:	E. Coli	
PURITY:	> 95% by SDS - PAGE	
MOL. WEIGHT:	48.4 kDa (433 aa, 1-413 aa + His Tag)	
FORM:	Liquid	
FORMULATION:	0.5 mg/ml solution 20 mM Tris-HCl buffer (pH 8.0), 10% glycerol, 150 mM NaCl and 1 mM DTT.	

STORAGE CONDITIONS:

Can be stored at 4°C short term (1-2 weeks). For long term storage, aliquot and store at -20°C or -70°C. Avoid repeated freezing and thawing cycles.

DESCRIPTION:

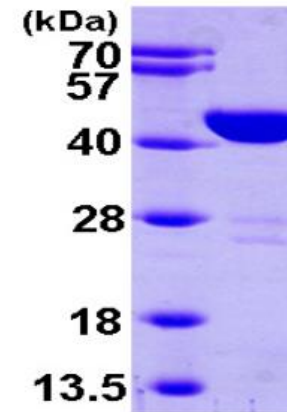
GOT2, also known as glutamate oxaloacetate transaminase 2, belongs to the class-I pyridoxal-phosphate-dependent aminotransferase family. Glutamate oxaloacetate transaminase is a pyridoxal phosphate-dependent enzyme which exists in cytoplasmic and inner-membrane mitochondrial forms, GOT1 and GOT2, respectively. GOT plays a role in amino acid metabolism and the urea and tricarboxylic acid cycles. The two enzymes are homodimeric and show close homology. Recombinant human GOT2 protein, fused to His-tag at N-terminus, was expressed in E.coli and purified by using conventional chromatography techniques.

AMINO ACID SEQUENCE:

MGSSHHHHHH SGLVPRGSH MGSSSWWTHV EMGPPDPILG VTEAFKRDTN
SKKMN LGVGA YRDDNGKPYV LPSVRKAEAQ IAAKNLDKEY LPIGGLAEFC KASAEALALGE
NSEVLKSGRF VTVQTISGTG ALRIGASFLQ RFFKFSRDVF LPKPTWGNHT PIFRDAGMQL
QGYYRYPKT CGFDFTGAVE DISKIPEQSV LLLHACAHNP TGVDPRPEQW KEIATVVKKR
NLFAFFDMAY QGFASGDGDK DAWAVRHFIE QGINVCLCQS YAKNMGLYGE
RVGAFTMVCK DADEAKRVES QLKILIRPMY SNPPLNGARI AAAILNTPDL RKQWLQEVKV
MADRIIGMRT QLVSNLKKEG STHNWQHITD QIGMFCFTGL KPEQVERLIK EFSIYMTKDG

BIOLOGICAL ACTIVITY:

Specific activity is > 44 unit/mg, in which one unit will convert 1.0 µmole of alpha-ketoglutarate to L-Glutamate per minute at pH 8.0 at 25°C.



15% SDS-PAGE (3µg)

Human Recombinant GOT1

RELATED PRODUCTS:

- GOT1, human recombinant (Cat. No. 7808-100)
- Aspartate Aminotransferase (AST or SGOT) Assay Kit (Cat. No. K753-100)

FOR RESEARCH USE ONLY! Not to be used in humans.