

PPM1F, human recombinant

CATALOG #: 7810-100 100 µg

ALTERNATE NAMES: Protein phosphatase 1F, CAMKP, CaMKPase, FEM-2, hFEM-2, POPX2

SOURCE: E. Coli

PURITY: > 90% by SDS - PAGE

MOL. WEIGHT: 52 kDa (477 aa, 1-454 aa + His Tag)

FORM: Liquid

FORMULATION: 1 mg/ml solution 20 mM Tris-HCl buffer (pH 8.0), 20% glycerol, 150 mM NaCl and 1 mM DTT.

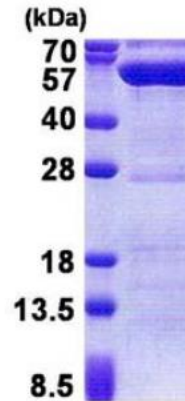
STORAGE CONDITIONS:
Can be stored at 4°C short term (1-2 weeks). For long term storage, aliquot and store at -20°C or -70°C. Avoid repeated freezing and thawing cycles.

DESCRIPTION:
PPM1F is a member of the PP2C family of Ser/Thr protein phosphatases. PP2C family members are known to be negative regulators of cell stress response pathways. This phosphatase can interact with Rho guanine nucleotide exchange factors (PIX), and thus block the effects of p21-activated kinase 1 (PAK), a protein kinase mediating biological effects downstream of Rho GTPases. Calcium/calmodulin-dependent protein kinase II gamma (CAMK2G/CAMK-II) is found to be one of the substrates of this phosphatase. Recombinant human PPM1F protein, fused to His-tag at N-terminus, was expressed in E.coli and purified by using conventional chromatography techniques.

AMINO ACID SEQUENCE:
 MGSSHHHHHH SGLVPRGSH MGSMSGAPQ KSSPMASGAE ETPGFLDTLL
 QDFPALLNPE DLPWKAPGT VLSQEEVEGE LAELAMGFLG SRKAPPPLAA
 ALAHEAVSQL LQTDLSEFRK LPREEEEEEE DDDEEEKAPV TLLDAQSLAQ SFFNRLWEVA
 GQWQKQVPLA ARASQRQWLV SIHAIRNTRR KMEDRHVSLP SFNQLFGLSD
 PVNRYFAVF DGHGGVDAAR YAAVHVHTNA ARQPELPTDP EGALREAFRR
 TDQMFLRKAK RERLQSGTTG VCALIAGATL HVAWLGDSSQV ILVQQGQVVK
 LMEPHRPERQ DEKARIEALG GFVSHMDCWR VNGTLAVSRA IGDVFQKPYV

SGEADAASRA LTGSEDYLLL ACDGFFDVVP HQEVVGLVQS HLTRQQGSGL
 RVAEELVAAA RERGSHDNIT VMVFLRDPQ ELLEGGNQGE GDPQAEGRRQ
 DLPSSLPEPE TQAPPRS

BIOLOGICAL ACTIVITY:
Specific activity is > 1200 unit/mg. Enzymatic activity was confirmed by measuring the amount of enzyme hydrolyzing 1 nmole of p-nitrophenyl phosphate (pNPP) per minute at 37°C, pH 7.5 using 10 mM of substrate.



15% SDS-PAGE (3µg)

Human Recombinant PPM1F

- RELATED PRODUCTS:**
- Human recombinant PPM1G (Cat. No. 6369-100)
 - PTP1B Antibody (Cat. No. 3171-100)
 - PTP1B Antibody (Cat. No. 3174-100)
 - Nodularin (Cat. No. 2994-50)
 - PTPRD Antibody (NT) (Cat. No. 5313-100)
 - PTP1B Antibody (Clone 107AT531) (Cat. No. 3122-100)
 - Phosphoseek™ PTP1B Assay kit (Cat. No. K707-400)
 - Human recombinant PTP1B (Cat. No. 6301-100)
 - Human recombinant SHP-1 (Cat. No. 6302-100)
 - Human recombinant PP2C alpha (Cat. No. 6303-100)
 - Human recombinant PPP1CA (Cat. No. 6370-100)
 - Human recombinant DUSP3 (Cat. No. 6371-100)

FOR RESEARCH USE ONLY! Not to be used in humans.

