

Human CellExp™ CNTFR / CNTFR-alpha, human recombinant

CATALOG #: 7836-10 10 µg
7836-50 50 µg

ALTERNATE NAMES: CNTFR, CNTF R alpha

SOURCE: HEK 293 cells (Gln 23 – Pro 346)

PURITY: ≥ 95% by SDS-PAGE gel

MOL. WEIGHT: This protein rh CNTFR alpha is fused with polyhistidine tag at the C-terminus, has a calculated MW of 36.9 kDa. The predicted N-terminus is Gln 23. DTT-reduced Protein migrates as 45-48 kDa due to glycosylation.

ENDOTOXIN LEVEL: < 1.0 EU per µg of the rh CNTFR alpha by the LAL method.

FORM: Lyophilized

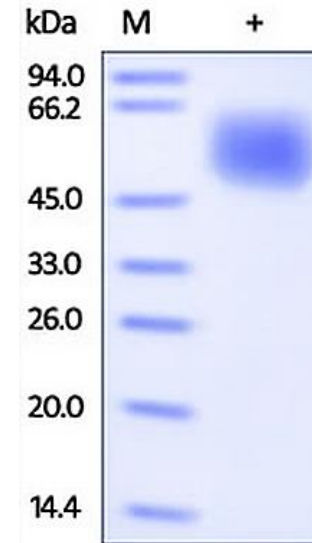
FORMULATION: Lyophilized from 0.22 µm filtered solution in PBS, pH 7.4. Normally Mannitol or Trehalose are added as protectants before lyophilization.

STORAGE CONDITIONS: Store at -20°C. After reconstitution, aliquot and store at -20°C or -70°C for up to 3 months. Avoid repeated freezing and thawing cycles. No activity loss was observed after storage in lyophilized state for 1 year (4°C) and after reconstitution under sterile conditions for 3 months (-70°C).

RECONSTITUTION: Centrifuge the vial prior to opening. Reconstitute in PBS, pH 7.4. Do not vortex.

DESCRIPTION: Ciliary neurotrophic factor receptor subunit alpha (CNTFR or CNTFR-alpha) belongs to the type I cytokine receptor family and type 3 subfamily. CNTFR contains two fibronectin type-III domains and one Ig-like C2-type (immunoglobulin-like) domain. This receptor and its cognate ligand support the survival of neurons. This receptor is most closely related to the interleukin-6 receptor. This receptor possesses an unusual attachment to the cell membrane through a glycoposphatidylinositol linkage.

BIOLOGICAL ACTIVITY: Measured by its binding ability in a functional ELISA. Immobilized human CNTFR at 10 µg/ml (100 µl/well) can bind biotinylated human CNTF with a linear ranger of 3.2 - 100 ng/ml.



Human recombinant CNTFR/CNTFR-alpha.
The purity of rh CNTFR alpha was determined by DTT-reduced (+) SDS-PAGE and staining overnight with Coomassie Blue.

RELATED PRODUCTS:

- CDNF, human recombinant (Cat. No. 4127-10, -50)
- CNTF, human recombinant (Cat. No. 4017-20, -1000)
- CNTF, rat recombinant (Cat. No. 4019-20, -1000)
- NT-3, human recombinant (Cat. No. 4306-10, -50, -1000)
- NT-3, murine recombinant (Cat. No. 4307-10, -50, -1000)

FOR RESEARCH USE ONLY! Not to be used in humans.

