

GLP-1, Human Recombinant

CATALOG #:	7839-200	200 µg
	7839-1000	1 mg
ALTERNATE NAMES:	Glucagon-Like Peptide 1	
SOURCE:	E. Coli	
PURITY:	≥ 98% by SDS-PAGE gel and HPLC analyses	
MOL. WEIGHT:	3.3 kDa	
ENDOTOXIN LEVEL:	< 0.1 ng/µg of protein (<1 EU/µg).	
FORM:	Lyophilized	
FORMULATION:	Sterile filtered through a 0.2 micron filter. Lyophilized with no additives.	
STORAGE CONDITIONS:	Store at -20°C. After reconstitution, aliquot and store at -20°C to -80°C. Avoid repeated freezing and thawing cycles.	

RECONSTITUTION:

Centrifuge the vial prior to opening. Reconstitute in water to a concentration of 0.1-1.0 mg/ml. Do not vortex. This solution can be stored at 2-8°C for up to 1 week. For extended storage, it is recommended to further dilute in a buffer containing a carrier protein (example 0.1% BSA) and store in working aliquots at -20°C to -80°C.

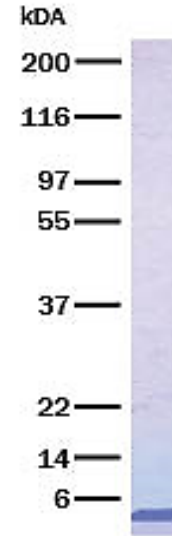
DESCRIPTION:

GLP-1 is a proglucagon-derived peptide hormone secreted primarily by intestinal L cells during feeding. Its major physiological function is stimulation of pancreatic β-cells to release appropriate amounts of insulin after glucose absorption. Other biological actions exhibited by GLP-1 include suppression of plasma glucagons levels, inhibition of gastric motility, and promotion of satiety. The secretion of GLP-1 from intestinal L cells is stimulated by nutrients, hormones, and neural inputs. On the other hand, insulin has been reported to inhibit GLP-1 release, indicating that a feedback loop mechanism regulates GLP-1 secretion. In addition to being the precursor of GLP-1, proglucagon, whose primary structure is highly conserved in mammalian species, is also the precursor for other members of the glucagon family of peptide hormones including glicentin-related

pancreatic peptide (GRPP), glucagons, and GLP-2. Recombinant human GLP-1 is a 3.3 kDa protein consisting of 31 amino acid residues.

AMINO ACID SEQUENCE:

HAEGTFTSDV SSYLEGQAAK EFWLVLKGR G



Human recombinant GLP-1. The purity of GLP-1 was determined by SDS-PAGE analysis.

RELATED PRODUCTS:

- GLP-1 Antibody (Clone HGL-B5) (**Cat. No. 3104-100**)
- Glucagon (human/mouse/rat) EIA Kit (**Cat. No. K4756-100**)
- Insulin, human recombinant (E. coli) (**Cat. No. 4722-5, -25**)
- Insulin, human recombinant (Yeast) (**Cat. No. 4723-5, -25**)
- Insulin Antibody (**Cat. No. 5722-20, -100**)
- Insulin (human) ELISA Kit (**Cat. No. K4742-100**)

FOR RESEARCH USE ONLY! Not to be used in humans.