

Active HIV1 Protease, Recombinant

CATALOG NO:	7849-20	20 µg
	7849-100	100 µg
ALTERNATIVE NAMES:	HIV-1 retropepsin, HIV-1 Protease (PR), cd05482	
SOURCE:	<i>E. coli</i>	
FORM:	Liquid	
FORMULATION:	3 mg/ml in 50 mM Sodium acetate, 100 mM NaCl, 5 mM DTT, 5 mM EDTA, pH 5.0 containing 10% glycerol	
PURITY:	≥ 90% by SDS-PAGE	
MOL. WT.:	38.4 kDa (1-99 aa + N-terminal GST and C-terminal Poly-his tags). It runs at ~31 kDa during SEC and SDS-PAGE analyses.	

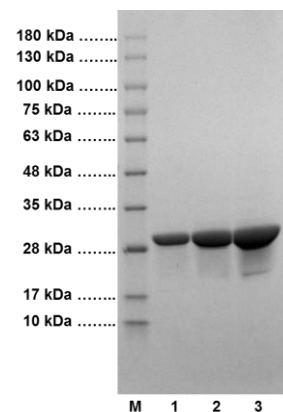
STORAGE CONDITIONS: Store at -80 °C. Stable for at least 6 months as supplied. It can be further diluted to 0.5-1 mg/ml with 50 mM Sodium acetate, 100 mM NaCl, 5 mM DTT, 5 mM EDTA, pH 5.0 containing 10% glycerol, and stored at -80 °C in aliquots. Do not keep the enzyme at 4 °C or -20 °C for extended time. Avoid repeated freezing and thawing cycles.

BACKGROUND: HIV-1 protease is a retroviral aspartyl protease (retropepsin) that is essential for the life-cycle of HIV. HIV protease cleaves newly synthesized viral polyproteins at the appropriate places into functional protein products as mature protein components of an infectious HIV virion. The mutation of HIV protease's active site or inhibition of its activity disrupts HIV's ability to replicate and infect additional cells.

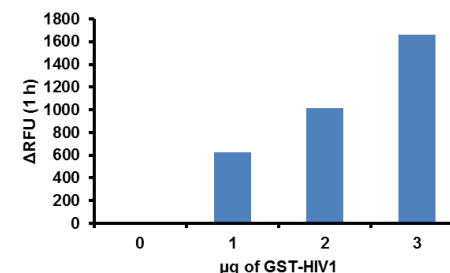
SPECIFIC ACTIVITY: ≥ 5.0 mU/mg, tested using BioVision's HIV1 Protease Activity Assay Kit (Cat. No. K825-100)

APPLICATIONS: Recombinant HIV1 Protease can be used in inhibitor screening assays, activity studies, selectivity profiling, western blotting, ELISA, and numerous such applications.

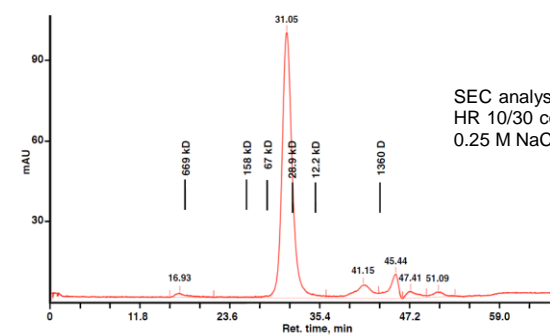
For Research Use Only! Not to be used in humans.



SDS-PAGE (4-20%) of GST-HIV1:
1: Protein Marker
2: GST-HIV1 (10 µg)
3: GST-HIV1 (20 µg)
4: GST-HIV1 (30 µg)



Measurement of GST-HIV1 activity by HIV1 Protease Activity Assay Kit (K825-100)



SEC analysis of GST-HIV1 using a Superdex 200 HR 10/30 column at 0.5 ml/min in 50 mM Tris and 0.25 M NaCl pH 7.5

RELATED PRODUCTS:

- EZCut™ TEV Protease, Recombinant (Cat. No. 7847-1000, -10000)
- TurboTEV Protease, Recombinant (Cat. No. 9205-1)
- Turbo3C (HRV3C) Protease, Recombinant (Cat. No. 9206-1)
- CXCR4 Antibody (Cat. No. 5541-100)
- Enfuvirtide Acetate (Cat. No. 2440-1)
- GSK1349572 (Cat. No. 2288-5, -25)
- Lopinavir (Cat. No. 2241-50, -250)
- TIP60 Antibody (Cat. No. 6634-50)