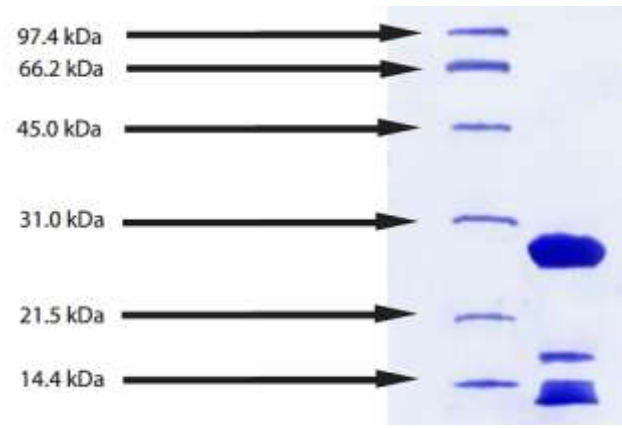


Lipoproteins, High Density, Human Plasma, Suitable for Cell Culture

CATALOG #:	7853-1000	1 mg
ALTERNATE NAMES:	HDL	
SOURCE:	Human Plasma. Shown to be non-reactive for HBsAg, anti-HCV, anti-HBc, and negative for anti-HIV 1 & 2 by FDA approved tests.	
MOL. WEIGHT:	175-360 kDa	
PURITY:	≥ 95% by SDS-PAGE; Single arc by IEP against antisera to whole human serum. Essentially free of other plasma lipoproteins as determined by electrophoresis using a SPIFE Vis Cholesterol gel kit for lipids and Coomassie Blue for proteins. Greater than 95% of total lipoprotein content by electrophoresis.	
FORM:	Liquid	
FORMULATION:	In 150 mM NaCl, pH 7.4, 0.01% EDTA	
STORAGE CONDITIONS:	Store at 2-6°C, away from light. Do Not Freeze	
USAGE/STABILITY:	Open under a laminar flow hood. Stable for ≤ 7 days once opened	
ENDOTOXIN LEVELS:	≤ 10 EU/mg by Pyrosate LAL clot test.	
DENSITY:	1.063-1.210 g/ml	
COMPOSITION:	55-45% lipid, 45-55% protein	
DESCRIPTION:	HDL is the vehicle for reversed cholesterol transport and esterification, serving as a scavenger for free cholesterol during intravascular catabolism of lipoproteins. HDL levels are inversely correlated with coronary heart disease. In a normal fasting individual, HDL concentrations range from 1.0-2.0 g/L.	



Lipoproteins, High Density, Human Plasma

12% Tris HCl gel

1. LMW Standard
2. HDL - 10 µg (reduced / heat)

RELATED PRODUCTS:

- Lipoproteins, Human Plasma, High Density (**Cat # 4934-1000**)
- Lipoproteins, Human Plasma, Intermediate Density (**Cat # 4932-1000**)
- Lipoproteins, Human Plasma, Very Low Density (**Cat # 4933-1000**)
- ApoA-1, human recombinant (**Cat # 4693-20, -100, -1000**)
- ApoA-1, rat recombinant (**Cat # 4695-20, -100, -1000**)
- Apo-D, human recombinant (**Cat # 4326-10, -1000**)
- APO-J / Clusterin (**Cat. No. 4325-10, -500**)
- Apo-SAA, human recombinant (**Cat # 4324-50, -500, -1000**)
- ApoE2, human recombinant (**Cat # 4760-50, -100, -500, -1000, -5000**)
- ApoE3, human recombinant (**Cat # 4696-50, -100, -500, -5000**)
- ApoE4, human recombinant (**Cat # 4699-50, -100, -500, -1000, -5000**)
- Apolipoprotein CI, Human Plasma (**Cat # 4703-100**)
- Apolipoprotein CII, Human Plasma (**Cat # 4704-50**)
- Apolipoprotein CIII, Human Plasma (**Cat # 4706-100**)

FOR RESEARCH USE ONLY! Not to be used in humans.