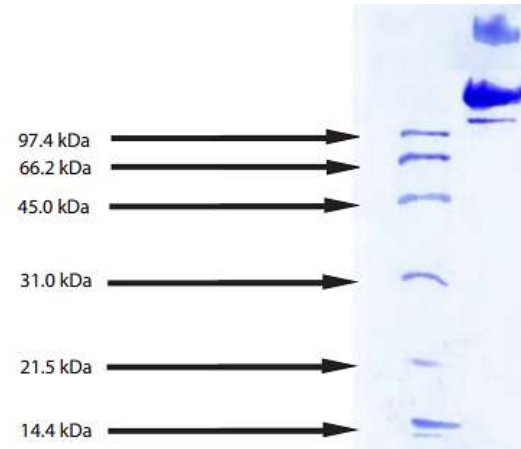


# Lipoproteins, Low Density, Human Plasma, Suitable for Cell Culture

<b>CATALOG #:</b>	7854-1000	1 mg
<b>ALTERNATE NAMES:</b>	LDL	
<b>SOURCE:</b>	Human Plasma. Shown to be non-reactive for HBsAg, anti-HCV, anti-HBc, and negative for anti-HIV 1 & 2 by FDA approved tests.	
<b>MOL. WEIGHT:</b>	2300 kDa	
<b>PURITY:</b>	≥ 95% by SDS-PAGE; Single arc by IEP against antisera to whole human serum. Essentially free of other plasma lipoproteins as determined by electrophoresis using a SPIFE Vis Cholesterol gel kit for lipids and Coomassie Blue for proteins. Greater than 95% of total lipoprotein content by electrophoresis.	
<b>FORM:</b>	Liquid	
<b>FORMULATION:</b>	In 150 mM NaCl, pH 7.4, 0.01% EDTA	
<b>STORAGE CONDITIONS:</b>	Store at 2-6°C, away from light. Do Not Freeze	
<b>USAGE/STABILITY:</b>	Open under a laminar flow hood. Stable for ≤ 7 days once opened	
<b>ENDOTOXIN LEVELS:</b>	≤ 10 EU/mg by Pyrosate LAL clot test.	
<b>DENSITY:</b>	1.02-1.063 g/ml	
<b>COMPOSITION:</b>	78-80% lipid, 22-20% protein	

**DESCRIPTION:** LDL levels strongly correlate with coronary heart disease. In a normal fasting individual, low density lipoprotein concentrations range from 2.0 - 3.5 g/L. LDL constitutes 50% of the total lipoprotein mass in plasma and is the major carrier of cholesterol and cholesteryl esters.



**Lipoproteins, Low Density, Human Plasma**

**12% Tris HCl gel**

1. LMW Standard
2. LDL - 10 µg (reduced / heat)

**RELATED PRODUCTS:**

- Lipoproteins, Human Plasma, High Density (Cat # 4934-1000)
- Lipoproteins, Human Plasma, Intermediate Density (Cat # 4932-1000)
- Lipoproteins, Human Plasma, Very Low Density (Cat # 4933-1000)
- ApoA-1, human recombinant (Cat # 4693-20, -100, -1000)
- ApoA-1, rat recombinant (Cat # 4695-20, -100, -1000)
- Apo-D, human recombinant (Cat # 4326-10, -1000)
- APO-J / Clusterin (Cat. No. 4325-10, -500)
- Apo-SAA, human recombinant (Cat # 4324-50, -500, -1000)
- ApoE2, human recombinant (Cat # 4760-50, -100, -500, -1000, -5000)
- ApoE3, human recombinant (Cat # 4696-50, -100, -500, -5000)
- ApoE4, human recombinant (Cat # 4699-50, -100, -500, -1000, -5000)
- Apolipoprotein CI, Human Plasma (Cat # 4703-100)
- Apolipoprotein CII, Human Plasma (Cat # 4704-50)
- Apolipoprotein CIII, Human Plasma (Cat # 4706-100)

**FOR RESEARCH USE ONLY! Not to be used in humans.**

