

Human CellExp™ Syndecan-1 Protein

CATALOG #: 7879-10 10 µg
7879-50 50 µg

ALTERNATE NAMES: SDC1, Syndecan-1, CD138, SYND1, SDC

SOURCE: HEK 293 cells (Gln 23 - Gly 254)

PURITY: >92% by SDS-PAGE.

MOL. WEIGHT: This protein is fused with polyhistidine tag at the C-terminus, has a calculated MW of 24.7 kDa. The predicted N-terminus is Gln 23. DTT-reduced Protein migrates as 48-60 kDa due to glycosylation.

ENDOTOXIN LEVEL: < 1.0 EU per µg of the protein by the LAL method.

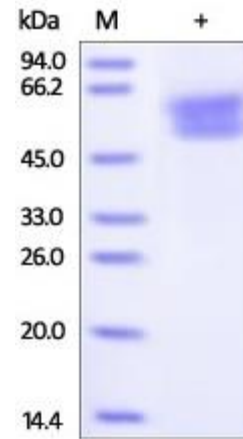
FORM: Lyophilized

FORMULATION: Lyophilized from 0.22 µm filtered solution in PBS, pH 7.4. Normally Mannitol or Trehalose are added as protectants before lyophilization.

STORAGE CONDITIONS: Store at 4°C for 1 year in lyophilized. After reconstitution, aliquot and store at -70°C for up to 3 months. Avoid repeated freezing and thawing cycles.

RECONSTITUTION: Centrifuge the vial prior to opening. Reconstitute in sterile deionized water to a stock solution of 200 µg/mL. Solubilize for 30 to 60 minutes at room temperature with occasional gentle mixing. Carrier protein (0.1% (W/V) HSA or BSA) is recommended for further dilution and long term storage.

DESCRIPTION: Syndecan-1 (SYND1 or SDC1) is also known as CD antigen CD138, is a transmembrane (type I) heparan sulfate proteoglycan and is a member of the syndecan proteoglycan family. The syndecans mediate cell binding, cell signaling, and cytoskeletal organization and syndecan receptors are required for internalization of the HIV-1 tat protein. The syndecan-1 / SDC1 protein functions as an integral membrane protein and participates in cell proliferation, cell migration and cell-matrix interactions via its receptor for extracellular matrix proteins. It is a useful marker for plasma cells, but only if the cells tested are already known to be derived from blood.



The purity of Human Syndecan-1 protein was determined by DTT-reduced (+) SDS-PAGE and staining overnight with Coomassie Blue.

RELATED PRODUCTS:

- Syndecan-1 Antibody (**Cat. No. 3643R-100**)
- Syndecan-1 Blocking Peptide (**Cat. No. 3643RBP-50**)
- Syndecan-3 Antibody (**Cat. No. 3824-100**)
- Syndecan-3 Blocking Peptide (**Cat. No. 3824BP-50**)
- Syndecan-4 Antibody (**Cat. No. 3644-100**)
- Syndecan-4 Blocking Peptide (**Cat. No. 3644BP-50**)
- CD44 Antibody (Clone # Hermes-3) (**Cat No. 6799-100**)

FOR RESEARCH USE ONLY! Not to be used in humans.