

Human Stathmin 1 / STMN1 Protein

CATALOG #: 7881-20 20 µg
7881-100 100 µg

ALTERNATE NAMES: STMN1, Stathmin, C1orf215, LAP18, OP18

SOURCE: E.coli (Ala 2 - Asp 149)

PURITY: ≥ 92% by SDS-PAGE gel

MOL. WEIGHT: This protein is fused with a polyhistidine tag at the N-terminus, and has a calculated MW of 18.1 kDa. The predicted N-terminus is Met. DTT-reduced Protein migrates as 17-20 kDa in SDS-PAGE.

ENDOTOXIN LEVEL: < 1.0 EU per µg of the protein by the LAL method.

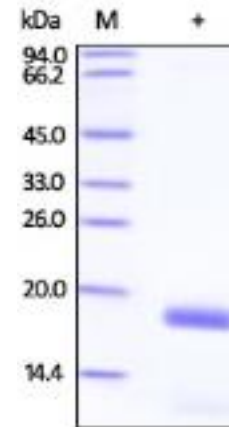
FORM: Lyophilized

FORMULATION: Lyophilized from 0.22 µm filtered solution in PBS, pH 7.4. Normally Mannitol or Trehalose are added as protectants before lyophilization.

STORAGE CONDITIONS: Store at 4°C for 1 year in lyophilized state. After reconstitution, aliquot and store at -70°C for up to 3 months. Avoid repeated freezing and thawing cycles.

RECONSTITUTION: Centrifuge the vial prior to opening. Reconstitute in sterile PBS, pH7.4 to a stock solution of 400 µg/mL. Solubilize for 30 to 60 minutes at room temperature with occasional gentle mixing. Carrier protein (0.1% (W/V) HSA or BSA) is recommended for further dilution and long term storage.

DESCRIPTION: Stathmin (STMN1), a member of the stathmin family, is also known as Leukemia-associated phosphoprotein p18, Oncoprotein 18 (Op18), Phosphoprotein p19 (pp19), Protein Pr22 and pp17, which contains one SLD (stathmin-like) domain. The function of STMN1 as an important regulatory protein of microtubule dynamics has been well-characterized. Stathmin (STMN1) interacts with two molecules of dimeric α,β -tubulin to form a tight ternary complex called the T2S complex. One mole of STMN1 binds to two moles of tubulin dimers through the stathmin-like domain (SLD). When STMN1 sequesters tubulin into the T2S complex, tubulin becomes non-polymerizable. Without tubulin polymerization, there is no microtubule assembly. STMN1 also promotes microtubule disassembly by acting directly on the microtubule ends.



The purity of Human Stathmin 1 / STMN 1 Protein was determined by DTT-reduced (+) SDS-PAGE and staining overnight with Coomassie Blue.

RELATED PRODUCTS:

- Tubulin Antibody (Cat. No. 3708-100)
- Tubulin Blocking Peptide (Cat. No. 3708BP-50)
- Beta3-Tubulin (TUJ-1) Antibody (Cat. No. 3525-100)
- Beta3-Tubulin (TUJ-1) Blocking Peptide (Cat. No. 3525BP-50)

FOR RESEARCH USE ONLY! Not to be used in humans.