

Human CellExp™ Siglec-6 / CD327 Protein, Fc Tag

CATALOG #: 7882-10 10 µg
7882-50 50 µg

ALTERNATE NAMES: SIGLEC6, CD327, CD33L, CD33L1, OBBP1, OB-BP1, CDw327

SOURCE: HEK293 (Gln 16 - Val 320)

PURITY: ≥ 92% by SDS-PAGE gel

MOL. WEIGHT: This protein is fused with Fc fragment of human IgG1 at the C-terminus, has a calculated MW of 60.3 kDa. The predicted N-terminus is Gln 16. As a result of glycosylation, DTT-reduced Protein migrates as 80-90 kDa and non-reduced protein migrates as 160-180 kDa.

ENDOTOXIN LEVEL: < 1.0 EU per µg of the protein by the LAL method.

FORM: Lyophilized

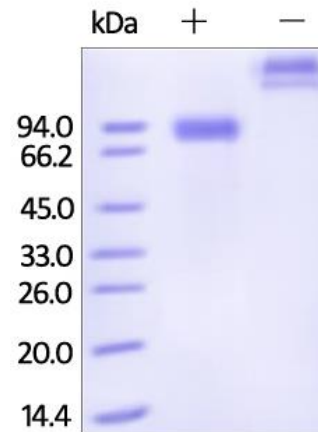
FORMULATION: Lyophilized from 0.22 µm filtered solution in 50 mM tris, 100 mM glycine, pH7.5. Normally Mannitol or Trehalose are added as protectants before lyophilization.

STORAGE CONDITIONS: Store at 4°C for 1 year in lyophilized state. After reconstitution, aliquot and store at -70°C for up to 3 months. Avoid repeated freezing and thawing cycles.

RECONSTITUTION: Centrifuge the vial prior to opening. Reconstitute in sterile deionized water to a stock solution of 200 µg/mL. Solubilize for 30 to 60 minutes at room temperature with occasional gentle mixing. Carrier protein (0.1% (W/V) HSA or BSA) is recommended for further dilution and long term storage.

DESCRIPTION: Sialic acid-binding Ig-like lectin 6 (SIGLEC6) is also known as CD antigen CD327, CD33 antigen-like 1 (CD33L or CD33L1), Obesity-binding protein 1 (OB-BP1). SIGLEC6 belongs to the immunoglobulin superfamily and SIGLEC (sialic acid binding Ig-like lectin) family, which contains two Ig-like C2-type (immunoglobulin-like) domains and one Ig-like V-type (immunoglobulin-like) domain. SIGLEC6 mediates sialic-acid dependent binding to cells. SIGLEC6 binds to alpha-2,6-linked sialic acid. The sialic acid recognition site may be masked by cis interactions with sialic acids on the same cell surface.

BIOACTIVITY: Measured by its ability to bind biotinylated Neu5Ac alpha 2-6GalNAc alpha (sialyl-Tn).



The purity of rhSIGLEC6 / CD327 Fc Chimeras was determined by DTT-reduced (+) and non-reduced (-) SDS-PAGE and staining overnight with Coomassie Blue.

RELATED PRODUCTS:

- Human CellExp™ CD33 / SIGLEC-3, human recombinant (Cat. No. 7370-10, -50)
- sCD22, Human Recombinant (Cat. No. 7123-10, -50)

FOR RESEARCH USE ONLY! Not to be used in humans.