

Recombinant Mouse Sonic Hedgehog (M-SHH)

CATALOG #:	7884-25	25 µg
	7884-100	100 µg
	7884-1000	1 mg
SOURCE:	<i>E. coli</i>	
PURITY:	> 97% by SDS-PAGE and HPLC analyses Endotoxin level is < 0.01 ng per µg rm-SHH	
MOLECULAR WT:	19.8 kDa	
FORM:	Lyophilized from a 10 mM sodium phosphate buffer (pH 7.5)	

RECONSTITUTION:

Centrifuge vial before opening. When reconstituting the product, gently pipet and wash down the sides of the vial to ensure full recovery of the protein into solution. It is recommended to reconstitute the lyophilized product with sterile water to a concentration of 0.1-0.5 mg/ml, which can be further diluted into other aqueous solutions.

STORAGE CONDITIONS:

The lyophilized human Sonic Hedgehog is very stable at -20 °C. Upon reconstitution the material should be aliquoted and frozen at -20 °C. It is recommended to add a carrier protein (0.1% HSA or BSA) for long term storage.

DESCRIPTION:

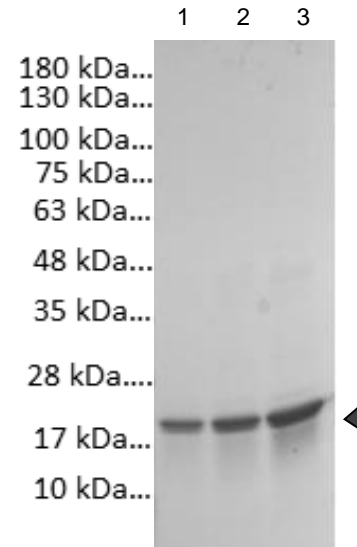
Recombinant Mouse Sonic Hedgehog is a member of a small group of secreted proteins that are essential for development in both vertebrates and invertebrates. Three mammalian hedgehog genes (sonic, desert, Indian) share about 60% homology. The Mouse Sonic Hedgehog is 99% homologous to the human gene. The recombinant mouse SHH consists of 174 amino acids (aa24-197) of the native sequence of SHH with predicted molecular weight of 19.7 kD.

APPLICATION: ELISA, Western blot, Protein array

AMINO ACID SEQUENCE:

MCGPGRGFG KRRHPKLTLP LAYKQFIPNV AEKTLGASGR YEGKTRNSE RFKELTPNYN
PDIIFKDEEN TGADRLMTQR CKDKLNALAI SVMNQWPGVK LRVTEGWDED GHHSEESLHY
EGRAVDITTS DRDRSKYGML ARLAVEAGFD WVYYESKAHI HCSVKAENSV AAKSGG

FOR RESEARCH USE ONLY! Not to be used on humans.



Purified recombinant mouse SHH separated on a 4-20% gradient gel

Lane1: 1 µg m-SHH
Lane2: 2 µg m-SHH
Lane3: 4 µg m-SHH

RELATED PRODUCTS:

- Active Sonic Hedgehog (SHH), human recombinant (Cat No. 4010-25, -100, -1000)
- Sonic Hedgehog (SHH), human recombinant (Cat No. 7883-25, -100, -1000)
- Active Sonic Hedgehog (SHH), murine recombinant (Cat No. 4020-25, -100, -1000)
- Human CellExp™ SHH, human recombinant (Cat No. 7223-10)