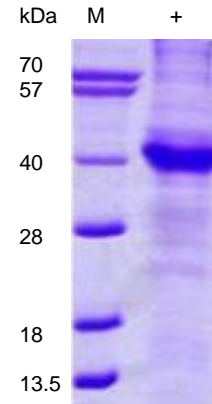


## APP (His-tagged), human recombinant

<b>CATALOG NO. :</b>	7887-10	10 µg
	7887-50	50 µg
<b>ALTERNATE NAMES:</b>	ABPP, APPI, APP, Alzheimer disease amyloid protein, Cerebral vascular amyloid peptide, CVAP, PreA4, Protease nexin-II, PN-II, Amyloid beta A4 protein	
<b>SOURCE:</b>	E. coli	
<b>PURITY:</b>	>85% by SDS-PAGE.	
<b>MOL. WEIGHT:</b>	34.7kDa (Leu18 - Glu289 + His tag) confirmed by MALDI-TOF	
<b>FORM:</b>	Liquid	
<b>CONCENTRATION:</b>	1 mg/ml	
<b>FORMULATION:</b>	20mM Tris-HCl buffer (pH8.0) containing 20% glycerol, 0.1M NaCl and 1mM DTT	
<b>STORAGE CONDITIONS:</b>	Can be stored at +4°C for 1-2 weeks. For long term storage, aliquot and store at -20°C or -70°C. Avoid repeated freezing and thawing cycles.	

**DESCRIPTION:** APP, also known as amyloid beta A4 protein, functions as a cell surface receptor and transmembrane precursor protein that is cleaved by secretases to form a number of peptides. Some of these peptides are secreted and can bind to the acetyltransferase complex APBB1/TIP60 to promote transcriptional activation, while others form the protein basis of the amyloid plaques found in the brains of patients with Alzheimer disease. Mutations in this gene have been implicated in autosomal dominant Alzheimer disease and cerebroarterial amyloidosis (cerebral amyloid angiopathy).



Three µg of Human Amyloid beta A4 protein was tested in SDS-PAGE and staining overnight with Coomassie Blue.

### RELATED PRODUCTS:

- APP Antibody (**Cat No. 6001-100**)
- APP Antibody (CT) (**Cat No. 5045-100**)
- Anti-Human Amyloid Beta 1-17 Antibody (Clone C4D10) (**Cat No. 5006-100**)