

HER2, Active, Human Recombinant

CATALOG #:	8011-5	5 µg
	8011-50	50 µg
ALTERNATIVE NAMES:	HER, v-erb-b2 erythroblastic leukemia viral oncogene homolog 2, neuro/glioblastoma derived oncogene homolog	
SOURCE:	<i>E. coli</i>	
FORM:	Liquid	
FORMULATION:	0.2 mg/ml in 50 mM Tris-HCl, pH 7.5, 150 mM NaCl, 0.25 mM DTT, 0.1 mM EGTA, 0.1 mM EDTA, 0.1 mM PMSF, 25% glycerol	
MOL. WT.:	~ 100 kDa protein in SDS-PAGE under reducing conditions (aa 676 - end, N terminal-GST tag)	
SPECIFIC ACTIVITY:	> 20 U/mg	
UNIT DEFINITION:	One unit is defined as the amount of enzyme required to produce 1 nmol of ADP per min. at 25°C, pH 7.2	
STORAGE CONDITIONS:	Store at -80°C in aliquots. Stable for at least 1 year as supplied. Avoid repeated freeze and thaw cycles.	
BACKGROUND:	HER2 gene encodes a cell-surface glycoprotein tyrosine kinase receptor with extensive homology to the epidermal growth factor receptor. HER2 is an oncogene and overexpression of unaltered HER2 coding sequences in NIH 3T3 cells results in cellular transformation and tumorigenesis. HER2 is amplified in about 30% of primary human breast malignancies and overexpression of HER2 is associated with the most aggressive tumors that show uncontrolled proliferation, resistance to apoptosis and increased motility.	
APPLICATIONS:	Recombinant HER2 can be used in inhibitor screening assays, activity studies, selectivity profiling, western blotting, ELISA, and numerous similar applications.	

For Research Use Only! Not to be used in humans.

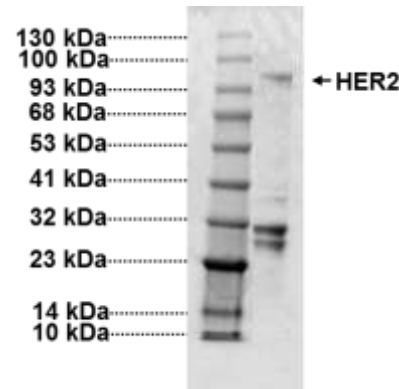
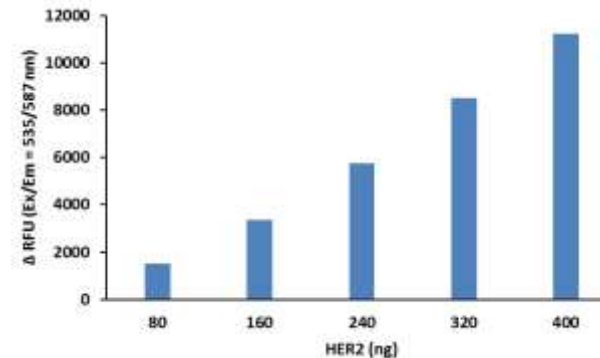


Figure 1: SDS-PAGE (4-20%) of HER2:
5 µg of Her2 Active recombinant protein loaded.

Figure 2: Catalytic Activity of HER2: The below mentioned amounts of Her2 were incubated with a synthetic peptide substrate called Poly (Glu:Tyr, 4:1), and ATP, in a 50 µl reaction. The amount of resultant ADP generated was monitored by increase in fluorescence at Ex/Em 535/587 nm over a period of 30 min by our PicoProbe™ ADP Assay Kit (K211).



RELATED PRODUCTS:

- HER2, Active (Cat # 7762-10, -100)
- HER2/ErbB2 Antibody (Cat # 3783-100)
- Human CellExp™ ErbB2 / HER2 / CD340, human recombinant (Cat # 7397-10)
- Ganetespib (STA-9090) (Cat # 9459-5, -25)
- Pozotinib (Cat # 9519-10, -50)
- PicoProbe™ ADP Assay Kit (K211-100)
- ADP/ATP Ratio Bioluminescence Assay Kit (Cat # K255-200)
- ADP Colorimetric/Fluorometric Assay Kit (Cat # K355-100)