

Human CellExp™ MBL/MBL2, human recombinant

CATALOG #:	8018-20	20 µg
ALTERNATE NAMES:	MBL, MBL2, MBP1, MBP-C, Collectin-1, COLEC1, HSMBPC, MBL2D, MBPD, Mannose binding Lectin	
SOURCE:	HEK 293 cells (Glu 21 – Ile 248)	
PURITY:	≥ 95% by SDS-PAGE gel	
MOL. WEIGHT:	This protein is fused with 6xHis tag at the C-terminus, has a calculated MW of 24.8 kDa. The predicted N-terminus is Glu 21. DTT-reduced Protein migrates as 30-33 kDa.	
ENDOTOXIN LEVEL:	< 1.0 EU per µg of the protein by the LAL method.	
FORM:	Lyophilized	

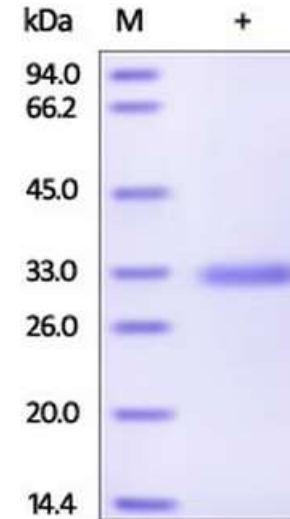
FORMULATION: Lyophilized from 0.22 µm filtered solution in PBS, pH 7.4. Normally Mannitol or Trehalose are added as protectants before lyophilization.

STORAGE CONDITIONS: Store at -20°C. After reconstitution, aliquot and store at -20°C or -70°C for up to 3 months. Avoid repeated freezing and thawing cycles. No activity loss was observed after storage in lyophilized state for 1 year (4°C) and after reconstitution under sterile conditions for 3 months (-70°C).

RECONSTITUTION: Centrifuge the vial prior to opening. Reconstitute in PBS, pH 7.4. Do not vortex.

DESCRIPTION: Mannose-binding lectin (MBL) is also known as mannose-binding protein, mannan-binding protein (MBP), Mannose-binding protein C, Collectin-1 (COLEC1), MBL2, which belongs to the class of collectins in the C-type lectin superfamily. MBL contains one C-type lectin domain and one collagen-like domain. MBL has an oligomeric structure (400-700 kDa), built of subunits that contain three presumably identical peptide chains of about 30 kDa each. MBL is calcium-dependent lectin involved in innate immune defense. MBL binds mannose, fucose and N-acetylglucosamine on different microorganisms and activates the lectin complement pathway. MBL binds to late apoptotic cells. MBL may bind DNA.

BIOLOGICAL ACTIVITY: Measured by its ability to bind with Mannan in a functional ELISA.



Human recombinant MBL/MBL2. The purity of rhMBL / MBL2 was determined by DTT-reduced (+) SDS-PAGE and staining overnight with Coomassie Blue.

RELATED PRODUCTS:

- Human CellExp™ CD223, human recombinant (**Cat. No. 7278-10, -50**)
- Human CellExp™ CD71, human recombinant (**Cat. No. 7279-10, -50**)
- Human CellExp™ CD273, human recombinant (**Cat. No. 7369-10, -50**)
- Human CellExp™ CD33, human recombinant (**Cat. No. 7370-10, -50**)
- Human CellExp™ CD36, human recombinant (**Cat. No. 7371-10, -50**)
- Human CellExp™ CD87, human recombinant (**Cat. No. 7372-20, -100**)
- Human CellExp™ CD360, human recombinant (**Cat. No. 7373-20, -100**)
- Human CellExp™ CD244, human recombinant (**Cat. No. 7374-10, -50**)
- Human CellExp™ CD304, human recombinant (**Cat. No. 7375-10**)
- Human CellExp™ CD319, human recombinant (**Cat. No. 7376-10, -50**)
- Human CellExp™ CD306, human recombinant (**Cat. No. 7377-10, -50**)
- Human CellExp™ CD84, human recombinant (**Cat. No. 7378-10, -50**)

FOR RESEARCH USE ONLY! Not to be used in humans.