

TurboTEV Protease, Recombinant

rev. 09/16

CATALOG NO: 9205-1 1 mg (10,000 units)
9205-10 10 mg

SOURCE: *E. coli*

DESCRIPTION: BioVision's TurboTEV Protease is a cysteine protease that recognizes the cleavage site of Glu-X_{aa}-X_{aa}-Y-X_{aa}-Gln-(Gly/Ser) and cleaves between Gln and Gly; the optimal sequence is Glu-Asn-Leu-Tyr-Phe-Gln-Ser. It contains an enhanced form of a catalytic fragment of the N1a protein of Tobacco etch virus (TEV), TurboTEV. TurboTEV Protease is a restriction grade protease that has robust activity at 4°C with high specificity and great stability. It does not require any special buffer for its activity and can be used in a buffer most suitable for the target protein. TurboTEV Protease is a 52 kDa protein with both GST and His tags so it can be removed by either Ni-chelating or glutathione (GSH) resin.

FORMULATION: 2 mg (20,000 units)/ml in 25 mM Tris-HCl, pH 8.0, 50 mM NaCl, 1 mM TCEP, 50% glycerol.

SPECIFIC ACTIVITY: ≥10,000 units/mg

UNIT ACTIVITY: One unit cleaves ≥85% of 3 µg control substrate, Glu-Asn-Leu-Tyr-Phe-Gln-Gly, in 1 hour at 30° C.

STORAGE CONDITIONS: -20° C. TurboTEV Protease retains > 80% activity after storage at room temperature for over 65 hours.

CLEAVAGE CONDITION: It is recommended to test TurboTEV Protease cleavage with a protease-to-target protein ratio of 1:100 (w/w) or 1 unit of TurboTEV to 10 µg of target protein in a buffer suitable for the target protein at 4° C overnight, with the target protein concentration at 1-2 mg/ml. In most cases, > 90% of target protein is cleaved with a TurboTEV-to-target protein ratio of 1:50 to 1:200 or 1 unit TurboTEV to 5-20 µg of target protein (as shown in Figure 1). The efficiency of cleavage may vary due to the sequences around the cleavage site, the conformation and the solubility of the target protein. Due to its high specificity, more TurboTEV Protease (at 1:10 ratio) or longer cleavage time (over a weekend) at higher temperature (37° C) can be used to achieve high cleavage efficiency without observation of non-specific cleavage of target proteins.

Removal of TurboTEV Protease after Cleavage: TurboTEV Protease contains both GST and His tags. After cleavage of the target protein, TurboTEV Protease is easily removed along with the tags from the cleavage reaction by affinity chromatography using a Ni-chelating resin for His-tagged target protein or a GSH resin for GST-tagged target protein.

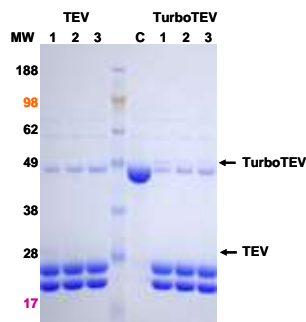


Figure 1. A 49 kDa GST-fusion protein (C) at 1 mg/ml is incubated with TurboTEV or TEV Protease at a ratio of (1) 1:50, (2) 1:100, (3) 1:200 (w/w) in a buffer of 25 mM Tris-HCl, pH 8.0, 150 mM NaCl, 14 mM β-mercaptoethanol at 4° C for 16 hours. The cleaved products are 27 kDa and 22 kDa. TEV is a competitor TEV product.

SUGGESTED PROTOCOL:

A) Cleavage in Solution

Gentaur Europe BVBA Voorstraat 49, 1910 Kampenhout BELGIUM
Tel 0032 16 58 90 45 info@gentaur.com



(An example of dialysis buffer would be 25 mM Tris-HCl, pH 8.0, 150 - 500 mM NaCl, 14 mM β-mercaptoethanol; TurboTEV has the same activity in 150 mM NaCl or 500 mM NaCl and 400 mM imidazole.)

- Dilute the target protein pool to 1-2 mg/ml with dialysis buffer. This is optional in case the target protein aggregates in dialysis buffer. Save a small aliquot as an uncut sample for analysis. EDTA may be added to 0.5 mM final concentration if the target protein pool is eluted from Ni column and EDTA is compatible with the target protein.
- Add TurboTEV Protease at a protease:target protein ratio of 1:100 (w/w) or 10,000 units (1 mg) TurboTEV Protease to 100 mg of target protein. There is no need to calculate the molar ratio. TurboTEV Protease can be added directly to the target protein. There is no need to change buffer or dilute TurboTEV Protease. The optimal ratio should be determined empirically. A protease-to-target protein ratio (w/w) of 1:50 to 1:200 should work for most target proteins.

4. Dialyze against the dialysis buffer at 4° C overnight (about 16 hrs). Dialysis is to remove imidazole or glutathione if a Ni-NTA or GSH column is used to remove the cleaved tag or TurboTEV Protease after cleavage. If desired, the target protein pool can be buffer exchanged first before TurboTEV cleavage.

B) Removal of TurboTEV Protease

1. The dialyzed target protein and TurboTEV Protease mixture can be applied directly to affinity columns if compatible Dialysis Buffer is used. For His-tagged protein, use IMAC to remove the cleaved His-tag and TurboTEV Protease. For GST-tagged protein, use glutathione column to remove the cleaved GST-tag and TurboTEV Protease.
2. If desired, analyze samples using SDS-PAGE analysis. The difference between the tagged and cleaved target protein may be too small to detect by SDS-PAGE. The cleaved His-tag sometimes can be seen at the bottom of the gel.

RELATED PRODUCTS:

TEV related Protease

- Turbo3C (HRV3C) Protease

Caspase Related Products

- CaspGLOW Active Caspase Staining Kits
- Caspase (1-12) Fluorometric Assay Kits
- Caspase (1-10) Colorimetric Assay Kits
- Caspase Inhibitor Drug Screening Kits
- CaspSELECT Caspase-3 & -7 Immunoassay Kits
- CaspSCREEN Flow Cytometric Caspase Screening Kit
- Human, Mouse, & Rat Active Caspases & Procaspsases
- Caspase Inhibitors & Sets (Ready-to-use)
- Caspase Substrates & Sets (Ready-to-use)
- Caspase Assay Buffers & Control Cell Lysates
- Antibodies to Pro- & Active Caspases
- siRNA Apoptosis Vectors
- Bulk Caspase Inhibitors (Powder form)

Calpain Related Products

- Calpain Activity Assay Kit
- Active Human Calpain I 1134-100
- Calpain Inhibitor, Z-Leu-Leu-Tyr-FMK
- Calpain 1 Polyclonal Antibody
- Calpain 2 Polyclonal Antibody
- Calpain 3 Polyclonal Antibody
- Calpain 5 Polyclonal Antibody
- Calpain 6 Polyclonal Antibody
- Calpain 7 Polyclonal Antibody
- Calpain Inhibitor, Z-Leu-Leu-Tyr-FMK
- Cathepsin B & L Inhibitor, Z-Phe-Phe-FMK
- Granzyme B Inhibitor, Z-Ala-Ala-Asp-CMK
- EMAP II Inhibitor, Z-ASTD-FMK
- Biotinylated Caspase Family Inhibitor, Biotin-MAD-FMK

Cathepsin Related Products

- Cathepsin B Activity Assay Kit
- Cathepsin D Activity Assay Kit
- Cathepsin K Activity Assay Kit
- Cathepsin H Activity Assay Kit
- Cathepsin L Activity Assay Kit
- Cathepsin S Activity Assay Kit
- Cathepsin B (Active)
- Cathepsin D (Active)
- Cathepsin H (Active)
- Cathepsin L (Active)
- Cathepsin L (Active)
- Cathepsin L (Active)
- Cathepsin L (Active)
- Cathepsin S (Active)
- Cathepsin B&L Inhibitor, Z-Phe-Phe-FMK
- Cathepsin B Polyclonal Antibody
- Cathepsin D Polyclonal Antibody
- Cathepsin F Polyclonal Antibody
- Cathepsin G Polyclonal Antibody
- Cathepsin H Polyclonal Antibody
- Cathepsin K Polyclonal Antibody
- Cathepsin L Monoclonal Antibody
- Cathepsin L Polyclonal Antibody
- Cathepsin L (Cleaved) Polyclonal Antibody
- Cathepsin P Polyclonal Antibody
- Cathepsin S Polyclonal Antibody
- Cathepsin S Polyclonal Antibody
- Cathepsin V Monoclonal Antibody
- Cathepsin V Polyclonal Antibody
- Cathepsin W Monoclonal Antibody

Molecular Biology Products

Gentaur Europe BVBA Voortstraat 49, 1910 Kampenhout BELGIUM
Tel 0032 16 58 90 45 info@gentaur.com



FOR RESEARCH USE ONLY! Not to be used on humans.