

Human CellExp™ CD163, Human recombinant

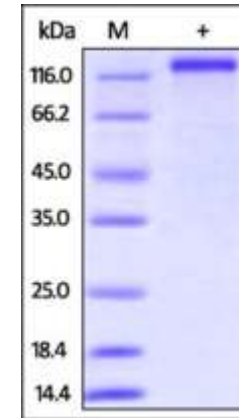
CATALOG #:	9226-10	10 µg
	9226-50	50 µg
ALTERNATE NAMES:	CD163, M130	
SOURCE:	HEK 293 cells (Ser 42 - Ser 1045)	
PURITY:	≥ 95% by SDS-PAGE gel	
MOL. WEIGHT:	This protein is fused with a 6xHis tag at C-terminus and the protein has a calculated MW of 110.4 kDa. The predicted N-terminus is Ser 42. DTT-reduced protein migrates as 135-140 kDa in SDS-PAGE due to glycosylation.	
ENDOTOXIN LEVEL:	<1 EU/µg by LAL method	
FORM:	Lyophilized	

FORMULATION: Lyophilized from 0.22 µm filtered solution in PBS, pH7.4. Generally Mannitol or Trehalose is added as a protectant before lyophilization.

STORAGE CONDITIONS: Store at -20°C. After reconstitution, aliquot and store at -20°C and use within 3 months. Avoid repeated freezing and thawing cycles.

RECONSTITUTION: Centrifuge the vial prior to opening. Reconstitute in sterile PBS, pH 7.4 to a concentration of 50 µg/ml. Do not vortex. This solution can be stored at 2-8°C for up to 1 month. For extended storage, it is recommended to store at -20°C.

DESCRIPTION: Scavenger receptor cysteine-rich type 1 protein M130 (CD163) is also known as hemoglobin scavenger receptor, which is a scavenger receptor for the hemoglobin-haptoglobin complex. CD163 has also been shown to mark cells of monocyte/macrophage lineage. A soluble form of the receptor exists in plasma, commonly denoted sCD163. sCD163 is generated by ectodomain shedding of the membrane bound receptor. sCD163 is upregulated in a large range of inflammatory diseases including liver cirrhosis, type 2 diabetes, macrophage activation syndrome, Gaucher's disease, sepsis, HIV infection, rheumatoid arthritis and Hodgkin Lymphoma.



The purity of Human CD163, His Tag was determined by DTT reduced (+) SDS-PAGE and staining overnight with Coomassie Blue.

RELATED PRODUCTS:

- Human CellExp™ CCL6, mouse recombinant (**Cat. No. 7226-10, -50**)
- Human CellExp™ CD155, human recombinant (**Cat. No. 7462-10, -50**)
- Human CellExp™ CD160/BY55, human recombinant (**Cat. No. 7386-10, -50**)
- Human CellExp™ CD166/ ALCAM, human recombinant (**Cat. No. 7437-10, -50**)
- Human CellExp™ CD172A / SIRP, human recombinant (**Cat. No. 7506-10, -50**)
- Human CellExp™ CD33 / SIGLEC-3, human recombinant (**Cat. No. 7370-10, -50**)
- Human CellExp™ CD47, human recombinant (**Cat. No. 7385-10, -50**)
- Human CellExp™ CD55/DAF, human recombinant (**Cat. No. 7432-10, -50**)
- Human CellExp™ CD58 /LFA-3, human recombinant (**Cat. No. 7427-10, -50**)
- Human CellExp™ CD62E/E-Selectin, human recombinant (**Cat. No. 7434-20, -100**)
- Human CellExp™ CD71 / TFRC / TFR, human recombinant (**Cat. No. 7279-10, -50**)
- Human CellExp™ CD74/DHLG, human recombinant (**Cat. No. 7387-10, -50**)
- Human CellExp™ CD223, human recombinant (**Cat. No. 7278-10, -50**)
- Human CellExp™ CD71, human recombinant (**Cat. No. 7279-10, -50**)
- Human CellExp™ CD273, human recombinant (**Cat. No. 7369-10, -50**)
- Human CellExp™ CD36, human recombinant (**Cat. No. 7371-10, -50**)
- Human CellExp™ CD87, human recombinant (**Cat. No. 7372-20, -100**)

FOR RESEARCH USE ONLY! Not to be used on humans.