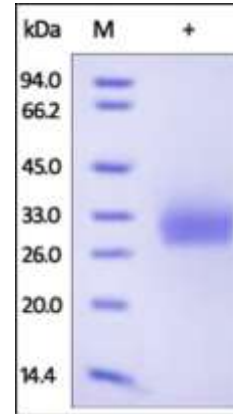


Human CellExp™ Human CD40/ TNFRSF5, Human recombinant

CATALOG #:	9230-10	10 µg
	9230-50	50 µg
ALTERNATE NAMES:	CD40, Bp50, CDW40, MGC9013, TNFRSF5, p50	
SOURCE:	HEK 293 cells (Glu 21 - Arg 193)	
PURITY:	≥ 95% by SDS-PAGE gel	
MOL. WEIGHT:	This protein is fused with a 6X His tag at C-terminus and the protein has a calculated MW of 20 kDa. The predicted N-terminus is Glu 21. DTT-reduced protein migrates as 32 kDa in SDS-PAGE due to glycosylation.	
ENDOTOXIN LEVEL:	<1 EU/µg by LAL metho	
FORM:	Lyophilized	
FORMULATION:	Lyophilized from 0.22 µm filtered solution in PBS, pH7.4. Normally Mannitol or Trehalose is added as a protectant before lyophilization.	
STORAGE CONDITIONS:	Store at -20°C. After reconstitution, aliquot and store at -20°C and use within 3 months. Avoid repeated freezing and thawing cycles.	
RECONSTITUTION:	Centrifuge the vial prior to opening. Reconstitute in sterile PBS, pH 7.4 to a concentration of 50 µg/ml. Do not vortex. This solution can be stored at 2-8°C for up to 1 month. For extended storage, it is recommended to store at -20°C.	

DESCRIPTION: Tumor necrosis factor receptor superfamily member 5 (TNFRSF5) is also known as CD40, is a member of the TNF receptor superfamily. The expression of CD40 is diverse. TNFRSF5 has been found to be essential in mediating a broad variety of immune and inflammatory responses including T cell-dependent immunoglobulin class switching, memory B cell development, and germinal center formation. CD40 is the receptor for TNFSF5/CD40LG. Defects in CD40 are the cause of immunodeficiency with hyper-IgM type 3 (HIGM3).

BIOLOGICAL ACTIVITY: Measured by its binding ability in a functional ELISA. Immobilized Human CD40, His Tag at 1 ng/mL (100 µl/well), can bind Human CD40 Ligand/TNFSF5 with a linear of 0.01-0.12 ng/ml.



The purity of Human CD40, His Tag was determined by DTT-reduced (+) SDS-PAGE and staining overnight with Coomassie Blue.

RELATED PRODUCTS:

- CD40 (human) ELISA Kit (**Cat. No. K3072-100**)
- CD40L (human) ELISA Kit (**Cat. No. K4783-100**)
- CD40Ligand/TRAP, human recombinant (**Cat. No. 4014-10, -50, -1000**)
- Human CellExp™ CD166/ ALCAM, human recombinant (**Cat. No. 7437-10, -50**)
- Human CellExp™ CD172A / SIRP, human recombinant (**Cat. No. 7506-10, -50**)
- Human CellExp™ CD33 / SIGLEC-3, human recombinant (**Cat. No. 7370-10, -50**)
- Human CellExp™ CD47, human recombinant (**Cat. No. 7385-10, -50**)
- Human CellExp™ CD55/DAF, human recombinant (**Cat. No. 7432-10, -50**)
- Human CellExp™ CD58 /LFA-3, human recombinant (**Cat. No. 7427-10, -50**)
- Human CellExp™ CD62E/E-Selectin, human recombinant (**Cat. No. 7434-20, -100**)
- Human CellExp™ CD71 / TFRC / TFR, human recombinant (**Cat. No. 7279-10, -50**)
- Human CellExp™ CD74/DHLA, human recombinant (**Cat. No. 7387-10, -50**)
- Human CellExp™ CD223, human recombinant (**Cat. No. 7278-10, -50**)
- Human CellExp™ CD71, human recombinant (**Cat. No. 7279-10, -50**)
- Human CellExp™ CD273, human recombinant (**Cat. No. 7369-10, -50**)
- Human CellExp™ CD36, human recombinant (**Cat. No. 7371-10, -50**)

FOR RESEARCH USE ONLY! Not to be used on humans.