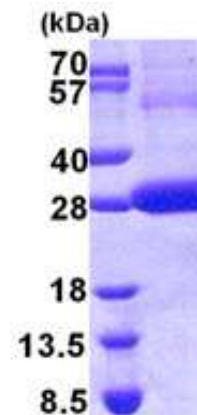


## Cathepsin F, human recombinant

<b>CATALOG NO:</b>	9232-10 9232-50	10 µg 50 µg
<b>ALTERNATE NAMES:</b>	CATSF, CLN13, CTSF	
<b>CONCENTRATION:</b>	1 mg/ml (determined by Bradford assay)	
<b>SOURCE:</b>	<i>E.coli</i> expressed recombinant CTSF protein, fused to His-tag at N-terminus	
<b>PURITY:</b>	> 95% by SDS-PAGE	
<b>MOL. WEIGHT:</b>	This protein is fused with 6x His tag at N terminus and the protein has a calculated MW of 26 kDa (237 aa).	
<b>FORM:</b>	Liquid	
<b>FORMULATION:</b>	In 20mM Tris-HCl buffer (pH 8.0) containing 0.4M Urea, 10% glycerol	
<b>STORAGE CONDITIONS:</b>	Store at +4°C for short term (1-2 weeks). For long term storage, aliquot and store at -70°C. Avoid repeated freezing and thawing cycles.	
<b>SEQUENCE:</b>	<p>MGSSHHHHHH SSGLVPRGSH MGSAPPEWDW RSKGAVTKVK  DQGMCGSCWA FSVTGNVEGQ WFLNQGTLLS LSEQELLDCD  KMDKACMGGL PSNAYSAIKN LGGLEDDY SYQGHMQSCN  FSAEKAKVYI NDSVELSQNE QKLAAWLAKR GPISVAINAF  GMQFYRHGIS RPLRPLCSPW LIDHAVLLVG YGNRSDVPFW  AIKNSWGTDW GEKGYYYLHR GSGACGVNTM ASSAVVD</p>	
<b>DESCRIPTION:</b>	<p>Cathepsin F, also known as CTSF, belongs to the cathepsin family. Cathepsins are papain family cysteine proteinases that represent a major component of the lysosomal proteolytic system. The CTSF gene is ubiquitously expressed, and it maps to chromosome 11q13, close to the gene encoding cathepsin W. CTSF is thought to play a role in normal protein catabolism, and because it is highly expressed in some cancer cell lines, it may be involved in degradative processes occurring during tumor progression. Recombinant human CTSF protein, fused to His-tag at N-terminus, was expressed in <i>E.coli</i>.</p>	



Human recombinant Cathepsin F

### RELATED PRODUCT:

- Cathepsin B, Active, human recombinant (**Cat. No. 7580-50**)
- Cathepsin D, Active, human recombinant (**Cat. No. 9229-50**)
- Cathepsin K, Active, human recombinant (**Cat. No. 7600-50**)
- Cathepsin L, human recombinant (**Cat. No. 1135-100**)
- Cathepsin S, Active, human recombinant (**Cat. No. 7526-50**)
- Human CellExp™ Cathepsin B, human recombinant (**Cat. No. 7408-10**)
- Human CellExp™ Cathepsin D, human recombinant (**Cat. No. 7409-10**)
- Human CellExp™ Cathepsin L1, human recombinant (**Cat. No. 7410-10**)
- Human CellExp™ Cathepsin S, human recombinant (**Cat. No. 7277-10**)
- Cathepsin S Activity Fluorometric Assay Kit (**Cat. No. K114-100**)
- Cathepsin S (human) ELISA Kit (**Cat. No. K7277-100**)
- Cathepsin E Activity Assay Kit (Fluorometric) (**Cat. No. K165-100**)
- Cathepsin D Activity Fluorometric Assay Kit (**Cat. No. K143-100**)
- Cathepsin B Activity Fluorometric Assay Kit (**Cat. No. K140-100**)

**FOR RESEARCH USE ONLY! Not to be used on humans.**