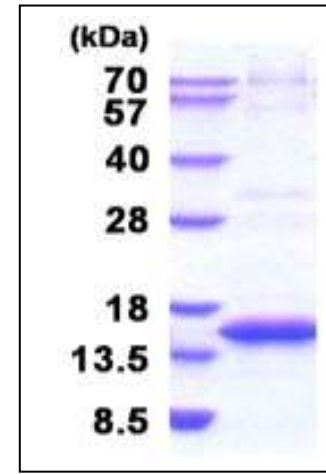


## CST6, human recombinant

<b>CATALOG NO:</b>	9234-10	10 µg
	9234-50	50 µg
<b>ALTERNATE NAMES:</b>	Cystatin-M, Cystatin E/M	
<b>CONCENTRATION:</b>	0.5 mg/ml (determined by Bradford assay)	
<b>SOURCE:</b>	<i>E.coli</i> expressed recombinant CST6 protein, fused to His-tag at N-terminus (29-149aa).	
<b>PURITY:</b>	> 90% by SDS-PAGE	
<b>MOL. WEIGHT:</b>	This protein is fused with 6x His tag at N terminus and the protein has a calculated MW of 15.9 kDa (142aa).	
<b>FORM:</b>	Liquid	
<b>FORMULATION:</b>	In 20mM Tris-HCl buffer(pH 8.0) containing 10% glycerol, 1mM DTT, 0.1M NaCl.	
<b>STORAGE CONDITIONS:</b>	Store at +4°C for short term (1-2 weeks). For long term storage, aliquot and store at -70°C. Avoid repeated freeze/thaw cycles.	
<b>SEQUENCE:</b>	MGSSHHHHHH SSGLVPRGSH MRPQERMVGE LRDLSPPDPQ VQKAAQAAVA SYNMGNSIY YFRDTHIIKA QSQLVAGIKY FLTMEMGSTD CRKTRVTGDH VDLTTCPLAA GAQQEKLKRD FEVLVVPWQN SSQLLKHNCV QM	
<b>DESCRIPTION:</b>	CST6 is a member of the type 2 cystatin family. Some of the members are active cysteine protease inhibitors, while cystatin E/M moderate the inhibition of cathepsin B but is not active against cathepsin C. CST6 is secretable proteins that influence osteogenesis and bone resorption, regulation of the insulin and hepatocyte growth factor receptors, and the response to systemic inflammation. Recombinant human CST6 protein, fused to His-tag at N-terminus, was expressed in <i>E.coli</i> and purified by using conventional chromatography techniques.	
<b>BIOLOGICAL ACTIVITY:</b>	The IC50 value is < 10nM. The inhibitory function of Cystatin 6 on protease activity of papain was measured by a fluorometric assay using Z-FR-AMC at pH 7.5 at 25°C.	



Human recombinant CST6

### RELATED PRODUCT:

- CSTA, human recombinant (Cat. No. 9236-10)
- CSTB, human recombinant (Cat. No. 9235-10)
- Cathepsin B, Active, human recombinant (Cat. No. 7580-50)
- Cathepsin D, Active, human recombinant (Cat. No. 9229-50)
- Cathepsin K, Active, human recombinant (Cat. No. 7600-50)
- Cathepsin L, human recombinant (Cat. No. 1135-100)
- Cathepsin S, Active, human recombinant (Cat. No. 7526-50)
- Human CellExp™ Cathepsin B, human recombinant (Cat. No. 7408-10)
- Human CellExp™ Cathepsin D, human recombinant (Cat. No. 7409-10)
- Human CellExp™ Cathepsin L1, human recombinant (Cat. No. 7410-10)
- Human CellExp™ Cathepsin S, human recombinant (Cat. No. 7277-10)
- Cathepsin S Activity Fluorometric Assay Kit (Cat. No. K114-100)
- Cathepsin B Activity Fluorometric Assay Kit (Cat. No. K140-100)

**FOR RESEARCH USE ONLY! Not to be used on humans.**