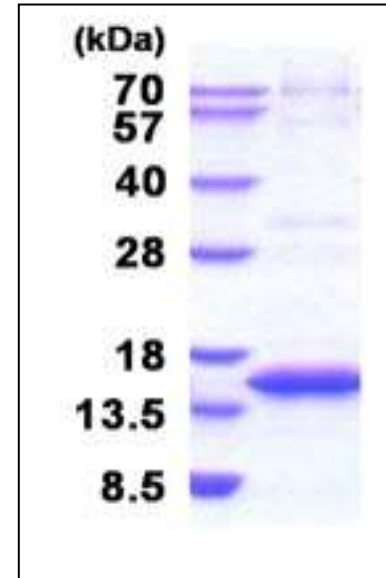


CSTB, human recombinant

| | | |
|-----------------------------|--|-------|
| CATALOG NO: | 9235-10 | 10 µg |
| | 9235-25 | 25 µg |
| ALTERNATE NAMES: | Cystatin-B, Stefin B, PME, CST6 | |
| CONCENTRATION: | 1 mg/ml (determined by Bradford assay) | |
| SOURCE: | <i>E.coli</i> expressed recombinant CSTB protein, fused to His-tag at N-terminus (1-98aa). | |
| PURITY: | > 95% by SDS-PAGE | |
| MOL. WEIGHT: | This protein is fused with 6x His tag at N terminus and the protein has a calculated MW of 13 kDa (118aa). | |
| FORM: | Liquid | |
| FORMULATION: | In 20 mM Tris-HCl buffer (pH8.0) containing 50mM NaCl. | |
| STORAGE CONDITIONS: | Store at +4°C for short term (1-2 weeks). For long term storage, aliquot and store at -70°C. Avoid repeated freeze/thaw cycles. | |
| ENDOTOXIN LEVEL: | 1 EU per 1ug of protein (determined by LAL method) | |
| SEQUENCE: | MGSSHHHHHH SGLVPRGSH MMCGAPSATQ PATAETQHIA DQVRSQLEEK ENKKFPVFKA VSFKSQVVAG TNYFIKVHVG DEDFVHLRVF QSLPHENKPL TLSNYQTNKA KHDELTYF | |
| DESCRIPTION: | CSTB, also known as Cystatin B is an anti-protease implicated in myoclonus epilepsy, a degenerative disease of the central nervous system. The cystatin superfamily encompasses proteins that contain multiple cystatin like sequences. Some of the members are active cysteine protease inhibitors, while others have lost or perhaps never acquired this inhibitory activity. This protein is able to form a dimer stabilized by noncovalent forces and is thought to play a role in protecting against the proteases leaking from lysosomes. In cells, CSTB is located in the lysosomes and the cytoplasm, but also in the nucleus. Recombinant CSTB, fused to His-tag, was expressed in <i>E.coli</i> and purified by using conventional chromatography techniques | |
| BIOLOGICAL ACTIVITY: | The IC50 value is < 3.0nM. The inhibitory function of Cystatin B on protease activity of papain was measured by a fluorometric assay using Z-FR-AMC at pH 7.5 at 25°C. | |



Human recombinant CSTB

RELATED PRODUCT:

- CSTA, human recombinant (**Cat. No. 9236-10**)
- CST6, human recombinant (**Cat. No. 9234-10**)
- Cathepsin B, Active, human recombinant (**Cat. No. 7580-50**)
- Cathepsin D, Active, human recombinant (**Cat. No. 9229-50**)
- Cathepsin K, Active, human recombinant (**Cat. No. 7600-50**)
- Cathepsin L, human recombinant (**Cat. No. 1135-100**)
- Cathepsin S, Active, human recombinant (**Cat. No. 7526-50**)
- Human CellExp™ Cathepsin B, human recombinant (**Cat. No. 7408-10**)
- Human CellExp™ Cathepsin D, human recombinant (**Cat. No. 7409-10**)
- Human CellExp™ Cathepsin L1, human recombinant (**Cat. No. 7410-10**)
- Human CellExp™ Cathepsin S, human recombinant (**Cat. No. 7277-10**)
- Cathepsin D Activity Fluorometric Assay Kit (**Cat. No. K143-100**)
- Cathepsin B Activity Fluorometric Assay Kit (**Cat. No. K140-100**)