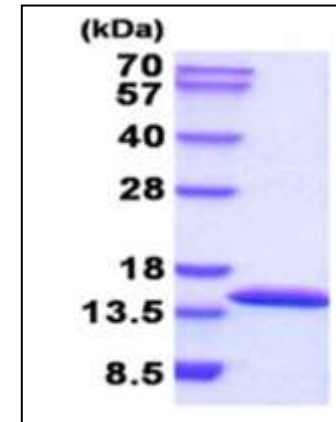


CSTA, human recombinant

CATALOG NO:	9236-10	10 µg
	9236-50	50 µg
ALTERNATE NAMES:	Cystatin-A, STF1, STFA	
CONCENTRATION:	1 mg/ml (determined by Bradford assay)	
SOURCE:	<i>E.coli</i> expressed recombinant CSTA protein, fused to His-tag at N-terminus (1-98aa).	
PURITY:	> 95% by SDS-PAGE	
MOL. WEIGHT:	This protein is fused with 6x His tag at N terminus and the protein has a calculated MW of 13.1 kDa (118aa).	
FORM:	Liquid	
FORMULATION:	In 20 mM Tris-HCl buffer (pH8.0) containing 1mM DTT, 10% glycerol	
STORAGE CONDITIONS:	Store at +4°C for short term (1-2 weeks). For long term storage, aliquot and store at -70°C. Avoid repeated freeze/thaw cycles.	
SEQUENCE:	MGSSHHHHHH SGLVPRGSH MIPGGLSEAK PATPEIQEIV DKVKPQLEEK TNETYGKLEA VQYKTQVVAG TNYIYKVRAG DNKYMHLKVF KSLPGQNE DL VLTGYQVDKN KDDELTF	
DESCRIPTION:	CSTA, also known as Stefin A, is thiol protease inhibitors that form complexes with papain and the cathepsins B, H and L. The protein is one of the precursor proteins of the cornified cell envelope in keratinocytes and plays a role in epidermal development and maintenance. CSTA is thought to be a tumor suppressor, since an inverse correlation seems to exist between the level of CSTA and tumor progression, in several malignancies Recombinant human CSTA protein, fused to His-tag at N-terminus, was expressed in <i>E.coli</i> and purified by using conventional chromatography techniques.	
BIOLOGICAL ACTIVITY:	The IC50 value is < 1.0nM. The inhibitory function of Cystatin A on protease activity of papain was measured by a fluorometric assay using Z-FR-AMC at pH 7.5 at 25°C.	



Human recombinant CSTA

RELATED PRODUCT:

- CSTB, human recombinant (**Cat. No. 9235-10**)
- CST6, human recombinant (**Cat. No. 9234-10**)
- Cathepsin B, Active, human recombinant (**Cat. No. 7580-50**)
- Cathepsin D, Active, human recombinant (**Cat. No. 9229-50**)
- Cathepsin K, Active, human recombinant (**Cat. No. 7600-50**)
- Cathepsin L, human recombinant (**Cat. No. 1135-100**)
- Cathepsin S, Active, human recombinant (**Cat. No. 7526-50**)
- Human CellExp™ Cathepsin B, human recombinant (**Cat. No. 7408-10**)
- Human CellExp™ Cathepsin D, human recombinant (**Cat. No. 7409-10**)
- Human CellExp™ Cathepsin L1, human recombinant (**Cat. No. 7410-10**)
- Human CellExp™ Cathepsin S, human recombinant (**Cat. No. 7277-10**)
- Cathepsin D Activity Fluorometric Assay Kit (**Cat. No. K143-100**)
- Cathepsin B Activity Fluorometric Assay Kit (**Cat. No. K140-100**)

FOR RESEARCH USE ONLY! Not to be used on humans.