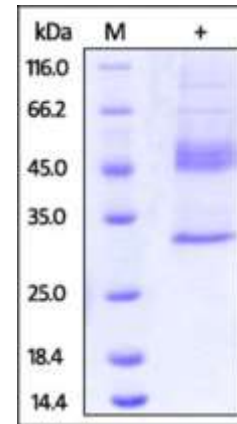


Human CellExp™ ICOS / CD278, Human recombinant

CATALOG NO:	9238-10 10 µg 9238-100 100 µg
ALTERNATE NAMES:	ICOS, CD278, AILIM
SOURCE:	HEK 293 cells (Glu 21 - Phe 141)
PURITY:	50% human ICOS (Fc Tag) and 50% human IgG1 Fc
MOL. WEIGHT:	This protein is fused with human IgG1 Fc tag at C terminus and the protein has a calculated MW of 40.4 kDa. The predicted N-terminus is Glu 21. DTT-reduced protein migrates as 45-50 kDa in SDS-PAGE due to glycosylation.
ENDOTOXIN LEVEL:	< 1.0 EU per 1µg of protein (determined by LAL method)
FORM:	Lyophilized
FORMULATION:	Lyophilized from 0.22 µm filtered solution in PBS, pH7.4. Generally Mannitol or Trehalose is added as a protectant before lyophilization.
STORAGE CONDITIONS:	Store at -20°C. After reconstitution, aliquot and store at -20°C and use within 3 months. Avoid repeated freezing and thawing cycles.
RECONSTITUTION:	Centrifuge the vial prior to opening. Reconstitute in sterile PBS, pH 7.4 to a concentration of 50 µg/ml. Do not vortex. This solution can be stored at 2-8°C for up to 1 month. For extended storage, it is recommended to store at -20°C.
DESCRIPTION:	Inducible T-cell costimulator (ICOS) is also known as Activation-inducible lymphocyte immunomediatory molecule (AILIM), CD278, which belongs to the CD28 family of immune costimulatory receptors consisting of CD28, CTLA-4 and PD-1. ICOS enhances all basic T-cell responses to a foreign antigen, namely proliferation, secretion of lymphokines, up-regulation of molecules that mediate cell-cell interaction, and effective help for antibody secretion by B-cells. CD278 / ICOS prevents the apoptosis of pre-activated T-cells and also plays a critical role in CD40-mediated class switching of immunoglobulin isotypes.
BIOLOGICAL ACTIVITY:	Measured by its binding ability in a functional ELISA. Immobilized Human B7-H2, His Tag at 3µg/ml (100 µl/well), can bind Human ICOS, Fc Tag with a linear of 0.5-5 ng/ml.



The purity of Human ICOS, Fc Tag was determined by DTT-reduced (+) SDS-PAGE and staining overnight with Coomassie Blue.

RELATED PRODUCT:

- Human CellExp™ CCL6, mouse recombinant (**Cat. No. 7226-10, -50**)
- Human CellExp™ CD155, human recombinant (**Cat. No. 7462-10, -50**)
- Human CellExp™ CD160/BY55, human recombinant (**Cat. No. 7386-10, -50**)
- Human CellExp™ CD166/ ALCAM, human recombinant (**Cat. No. 7437-10, -50**)
- Human CellExp™ CD172A / SIRP, human recombinant (**Cat. No. 7506-10, -50**)
- Human CellExp™ CD33 / SIGLEC-3, human recombinant (**Cat. No. 7370-10, -50**)
- Human CellExp™ CD47, human recombinant (**Cat. No. 7385-10, -50**)
- Human CellExp™ CD55/DAF, human recombinant (**Cat. No. 7432-10, -50**)
- Human CellExp™ CD58 /LFA-3, human recombinant (**Cat. No. 7427-10, -50**)
- Human CellExp™ CD62E/E-Selectin, human recombinant (**Cat. No. 7434-20, -100**)
- Human CellExp™ CD71 / TFRC / TFR, human recombinant (**Cat. No. 7279-10, -50**)
- Human CellExp™ CD273, human recombinant (**Cat. No. 7369-10, -50**)
- Human CellExp™ CD36, human recombinant (**Cat. No. 7371-10, -50**)
- Human CellExp™ CD87, human recombinant (**Cat. No. 7372-20, -100**)

FOR RESEARCH USE ONLY! Not to be used on humans.