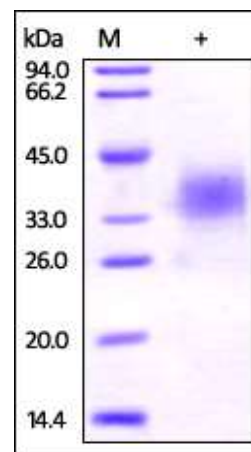


Human CellExp™ B7-H5 / VISTA, Human recombinant

CATALOG NO:	9242-10	10 µg
	9242-50	50 µg
ALTERNATE NAMES:	B7-H5, SISP1, Gi24, VISTA	
SOURCE:	HEK 293 cells (Phe 33 - Ala 194)	
PURITY:	> 95% by SDS-PAGE	
MOL. WEIGHT:	This protein is fused with human IgG1 Fc tag at C terminus and the protein has a calculated MW of 20 kDa. The predicted N-terminus is Phe 33. The protein migrates as 33-41 kDa in SDS-PAGE under reducing conditions due to glycosylation.	
ENDOTOXIN LEVEL:	< 1.0 EU per 1µg of protein (determined by LAL method)	
FORM:	Lyophilized	
FORMULATION:	Lyophilized from 0.22 µm filtered solution in PBS, pH7.4. Generally Mannitol or Trehalose is added as a protectant before lyophilization.	
STORAGE CONDITIONS:	Store at -20°C. After reconstitution, aliquot and store at -20°C and use within 3 months. Avoid repeated freezing and thawing cycles.	
RECONSTITUTION:	Centrifuge the vial prior to opening. Reconstitute in sterile PBS, pH 7.4 to a concentration of 50 µg/ml. Do not vortex. This solution can be stored at 2-8°C for up to 1 month. For extended storage, it is recommended to store at -20°C.	
DESCRIPTION:	Platelet receptor Gi24, also known as B7-H5 and stress-induced secreted protein-1 (Sisp-1), is a protein that in humans is encoded by the C10orf54 gene, which contains 1 Ig-like (immunoglobulin-like) domain. As for C10orf54 gene, C10orf54 appears to positively interact with BMP-4, potentiating BMP signaling and the transition from an undifferentiated to a differentiated state on ESCs. Human C10orf54 undergoes proteolytic cleavage by MT1-MMP, generating a soluble 30 kDa extracellular fragment plus a 25-30 kDa membrane-bound fragment.	



The purity of rh B7-H5 / Gi24 / VISTA was determined by DTT-reduced (+) SDS-PAGE and staining overnight with Coomassie Blue.

RELATED PRODUCT:

- Human CellExp™ CCL6, mouse recombinant (**Cat. No. 7226-10, -50**)
- Human CellExp™ CD155, human recombinant (**Cat. No. 7462-10, -50**)
- Human CellExp™ CD160/BY55, human recombinant (**Cat. No. 7386-10, -50**)
- Human CellExp™ CD166/ALCAM, human recombinant (**Cat. No. 7437-10, -50**)
- Human CellExp™ CD172A / SIRP, human recombinant (**Cat. No. 7506-10, -50**)
- Human CellExp™ CD33 / SIGLEC-3, human recombinant (**Cat. No. 7370-10, -50**)
- Human CellExp™ CD47, human recombinant (**Cat. No. 7385-10, -50**)
- Human CellExp™ CD55/DAF, human recombinant (**Cat. No. 7432-10, -50**)
- Human CellExp™ CD58 /LFA-3, human recombinant (**Cat. No. 7427-10, -50**)
- Human CellExp™ CD62E/E-Selectin, human recombinant (**Cat. No. 7434-20, -100**)
- Human CellExp™ CD71 / TFRC / TFR, human recombinant (**Cat. No. 7279-10, -50**)
- Human CellExp™ CD273, human recombinant (**Cat. No. 7369-10, -50**)
- Human CellExp™ CD36, human recombinant (**Cat. No. 7371-10, -50**)
- Human CellExp™ CD87, human recombinant (**Cat. No. 7372-20, -100**)

FOR RESEARCH USE ONLY! Not to be used on humans.