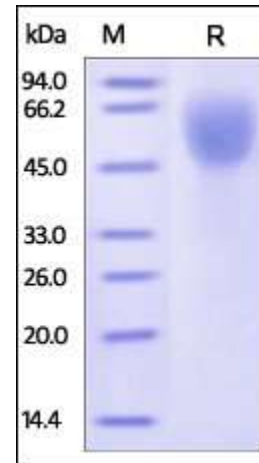


## Human CellExp™ CD27 / TNFRSF7, Human recombinant

<b>CATALOG NO:</b>	9243-25 9243-100	25 µg 100 µg
<b>ALTERNATE NAMES:</b>	CD27, TNFRSF7, S152, S152, LPFS2, T14, Tp55	
<b>SOURCE:</b>	HEK 293 cells (Thr 21-Ile 192)	
<b>PURITY:</b>	> 95% by SDS – PAGE	
<b>MOL. WEIGHT:</b>	This protein is fused with human IgG1 Fc tag at C terminus and the protein has a calculated MW of 45.9 kDa. The predicted N-terminus is Thr 21. The protein migrates as 45-65 kDa in SDS-PAGE under reducing conditions due to glycosylation.	
<b>ENDOTOXIN LEVEL:</b>	< 1.0 EU per 1µg of protein (determined by LAL method)	
<b>FORM:</b>	Lyophilized	
<b>FORMULATION:</b>	Lyophilized from 0.22 µm filtered solution in PBS, pH7.4. Generally Mannitol or Trehalose is added as a protectant before lyophilization.	
<b>STORAGE CONDITIONS:</b>	Store at -20°C. After reconstitution, aliquot and store at -20°C and use within 3 months. Avoid repeated freezing and thawing cycles.	
<b>RECONSTITUTION:</b>	Centrifuge the vial prior to opening. Reconstitute in sterile PBS, pH 7.4 to a concentration of 50 µg/ml. Do not vortex. This solution can be stored at 2-8°C for up to 1 month. For extended storage, it is recommended to store at -20°C.	
<b>DESCRIPTION:</b>	CD Antigen CD27 is also known as Tumor necrosis factor receptor superfamily member 7 (TNFRSF7), which belongs to TNF receptor superfamily. CD27 / TNFRSF7 is found in most T-lymphocytes. CD27 / TNFRSF7 is required for generation and long term maintenance of T cell immunity. It binds to ligand CD70, and plays a key role in regulating B-cell activation and immunoglobulin synthesis. This receptor transduces signals that lead to the activation of NF-κB and MAPK8/JNK. CD27 has been shown to interact with SIVA1, TRAF2 and TRAF3.	



Human CD27, Fc Tag on SDS-PAGE under reducing (R) condition. The gel was stained overnight with Coomassie Blue. The purity of the protein is greater than 95%.

### RELATED PRODUCT:

- Human CellExp™ CCL6, mouse recombinant (**Cat. No. 7226-10, -50**)
- Human CellExp™ CD155, human recombinant (**Cat. No. 7462-10, -50**)
- Human CellExp™ CD160/BY55, human recombinant (**Cat. No. 7386-10, -50**)
- Human CellExp™ CD166/ ALCAM, human recombinant (**Cat. No. 7437-10, -50**)
- Human CellExp™ CD172A / SIRP, human recombinant (**Cat. No. 7506-10, -50**)
- Human CellExp™ CD33 / SIGLEC-3, human recombinant (**Cat. No. 7370-10, -50**)
- Human CellExp™ CD47, human recombinant (**Cat. No. 7385-10, -50**)
- Human CellExp™ CD55/DAF, human recombinant (**Cat. No. 7432-10, -50**)
- Human CellExp™ CD58 /LFA-3, human recombinant (**Cat. No. 7427-10, -50**)
- Human CellExp™ CD62E/E-Selectin, human recombinant (**Cat. No. 7434-20, -100**)
- Human CellExp™ CD71 / TFRC / TFR, human recombinant (**Cat. No. 7279-10, -50**)
- Human CellExp™ CD273, human recombinant (**Cat. No. 7369-10, -50**)
- Human CellExp™ CD36, human recombinant (**Cat. No. 7371-10, -50**)
- Human CellExp™ CD87, human recombinant (**Cat. No. 7372-20, -100**)

**FOR RESEARCH USE ONLY! Not to be used on humans.**