

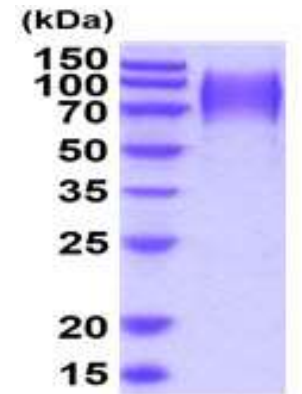
Podocalyxin, mouse recombinant

CATALOG NO:	P1033-10	10 µg
	P1033-50	50 µg
ALTERNATE NAMES:	Podxl, AW121214, Ly102, PC, PCLP-1, Pclp1	
CONCENTRATION:	0.5 mg/ml (determined by Absorbance at 280nm)	
SOURCE:	Baculovirus	
PURITY:	> 95% by SDS-PAGE	
MOL. WEIGHT:	The protein is fused to His-tag at C-terminus and the protein has calculated MW of 41.0 kDa (391aa). The protein migrates as 70-100 KDa (SDS-PAGE under reducing conditions.)	
FORM:	Liquid	
ENDOTOXIN LEVEL:	< 1.0 EU per 1 microgram of protein (determined by LAL method)	
FORMULATION:	In Phosphate Buffered Saline (pH 7.4) containing 10% glycerol..	
STORAGE CONDITIONS:	Store at +4°C for short term (1-2 weeks). For long term storage, aliquot and store at -70°C. Avoid repeated freeze/thaw cycles.	

DESCRIPTION: PODXL, also known as Podocalyxin, is a heavily glycosylated transmembrane sialoprotein in the CD34 and endoglycan family. This protein involved in the regulation of both adhesion and cell morphology and cancer progression. It has to function as an anti-adhesive molecule that maintains an open filtration pathway between neighboring foot processes in the podocyte by charge repulsion. Also, it acts as a pro-adhesive molecule, enhancing the adherence of cells to immobilized ligands, increasing the rate of migration and cell-cell contacts in an integrin-dependent manner. Recombinant mouse PODXL, fused to His-tag at C-terminus, was expressed in insect cell and purified by using conventional chromatography techniques.

SEQUENCE:

HNGNETSTSA	IKSSTVQSHQ	SATTSTEVTT	GHPVASTLAS
TQPSNPTPFT	TSTQSPSMPT	STPNPTSNQS	GGNLTSSVSE
VDKTKTSSPS	STAFSTSSGQ	TASSGGKSGD	SFTTAPTTTL
GLINVSSQPT	DLNTTSKLLS	TPTTDNNTSP	QQPVDSSPST
ASHPVGQHTP	AAVPSSSGST	PSTDNSTLTW	KPTTHKPLGT
SEATQPLTSQ	TPGITTLPVS	TLQQSMASSTV	GTTTEEFTHL
ISNGTPVAPP	GPSTPSPIWA	FGNYQLNCEP	PIRPDEELLI
LNLTRASLCE	RSPLDEKEKL	VELLCHSVKA	SFKPAEDLCT
LHVAPILDNQ	AVAVKRIIIE	TKLSPKAVYE	LLKDRWDDLTL
EAGVSDMKLG	KEGPPEVND	RFSLEHHHHH	H



15% SDS-PAGE (3µg)

Human mouse Podocalyxin

RELATED PRODUCT:

- CSTB, human recombinant (**Cat. No. 9235-10**)
- CST6, human recombinant (**Cat. No. 9234-10**)
- Cathepsin B, Active, human recombinant (**Cat. No. 7580-50**)
- Cathepsin D, Active, human recombinant (**Cat. No. 9229-50**)
- Cathepsin K, Active, human recombinant (**Cat. No. 7600-50**)
- Cathepsin L, human recombinant (**Cat. No. 1135-100**)
- Cathepsin S, Active, human recombinant (**Cat. No. 7526-50**)
- Human CellExp™ Cathepsin B, human recombinant (**Cat. No. 7408-10**)
- Human CellExp™ Cathepsin D, human recombinant (**Cat. No. 7409-10**)
- Human CellExp™ Cathepsin L1, human recombinant (**Cat. No. 7410-10**)
- Human CellExp™ Cathepsin S, human recombinant (**Cat. No. 7277-10**)
- Cathepsin D Activity Fluorometric Assay Kit (**Cat. No. K143-100**)
- Cathepsin B Activity Fluorometric Assay Kit (**Cat. No. K140-100**)

FOR RESEARCH USE ONLY! Not to be used on humans.