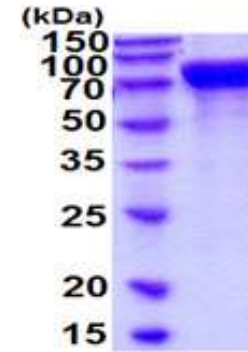


## Mep1b, mouse recombinant

<b>CATALOG NO:</b>	P1041-10	10 µg
<b>ALTERNATE NAMES:</b>	Meprin A subunit beta, Mep1b, Mep-1b	
<b>CONCENTRATION:</b>	0.25 mg/ml (determined by Absorbance at 280nm)	
<b>SOURCE:</b>	Baculovirus (21-654aa)	
<b>PURITY:</b>	> 90% by SDS-PAGE	
<b>MOL. WEIGHT:</b>	This protein is fused with 6x His tag at C terminus and the protein has a calculated MW of 72.6 kDa (642aa) and predicted N-terminal is Leu21. The protein migrates as 70-100 kDa in SDS-PAGE under reducing conditions.	
<b>ENDOTOXIN LEVEL:</b>	< 1.0 EU per 1µg of protein (determined by LAL method)	
<b>FORM:</b>	Liquid	
<b>FORMULATION:</b>	In Phosphate Buffered Saline (pH 7.4) containing 10% glycerol	
<b>STORAGE CONDITIONS:</b>	Store at +4°C for short term (1-2 weeks). For long term storage, aliquot and store at -70°C. Avoid repeated freeze/thaw cycles.	
<b>SEQUENCE:</b>	<p>           LPAPEKFKVD IDGGIDQDIF DINQGLGLDL FEGDIKLEAN            GKNSIIGDHK RWPHTIPYVL EDSLEMNAKG VILNAFERYR            LKTCIDFKPW SGEANYISVF KGSGCWSSVG NIHAGKQELS            IGTNCDRIAT VQHEFLHALG FWHEQSRADR DDYVIVWDR            IQPGKEHNFN IYNDVSDSL NVPYDYTSVM HYSKTAFQNG            TESTIVTRIS EFEDVIGQRM DFSDYDLLKL NQLYNCTSSL            SFMDSCDFEL ENICGMIQSS GDSADWQRVS QVLSGPESDH            SKMGQCKDSG FFMHFNTSIL NEGATAMLES RLLYPKRGFQ            CLEFYLYNSG SGNDQLNIYT REYTTGQQGG VLTLRQIKE            VPIGSWQLHY VTLQVTKKFR VVFEGLRGP TSSGGLSIDD            INLSETRCPH HIWHIQNFTQ ILGGQDTSVY SPPFYSSKGY            AFQIYMDLRS STNVGIYFHL ISGANDDLQ WPCPWQQATM            TLLDQNPDIR QRMFNQRSIT TDPTMTSDNG SYFWDPRPSKV            GVTDVFPNGT QFSRGIGYGT TVFITRERLK SREFIKGDDI            YILLTVEDIS HLNSTSAVPD PVPTLAVHNA CSEVVCQNGG            ICVVQDGRAE CKCPAGEDWW YMGKRCEKRG STRDVEHHHH            HH         </p>	

**DESCRIPTION:** MEP1B, also known as meprin A subunit beta, is a member of the astacin family of zinc endopeptidases 1, 2. It is disulfide-linked, tetrameric metalloendopeptidases in renal brush border membranes. It is highly regulated, secreted, and cell-surface metalloendopeptidases that are abundantly expressed in the kidney and intestine. Recombinant mouse MEP1B, fused to His-tag at C-terminus, was expressed in insect cell and purified by using conventional chromatography techniques.



15% SDS-PAGE (3µg)

Mouse recombinant Mep1b

### RELATED PRODUCTS:

- Human recombinant UBE2D2 (UbcH5b) (Cat. No. 6435-3)
- Human recombinant UBE2D3 (Cat. No. 6430-3)
- Human recombinant UBE2E2 (UbcH8) (Cat. No. 6438-3)
- Human recombinant UBE2E3 (UbcH9) (Cat. No. 6439-3)
- Human recombinant UBE2H (UbcH2) (Cat. No. 6440-3)
- Human recombinant UBE2H (UbcH2), HIS6SUMO (Cat. No.6441-3)
- Human recombinant UBE2K (Cat. No. 6432-3)
- Human recombinant UBE2L3 (Cat. No. 6431-3)
- Human recombinant UBE2R1 (CDC34) (Cat. No. 6436-3)
- Human recombinant UBE2R2 (Ubc3B) (Cat. No. 6437-3)

**FOR RESEARCH USE ONLY! Not to be used on humans.**