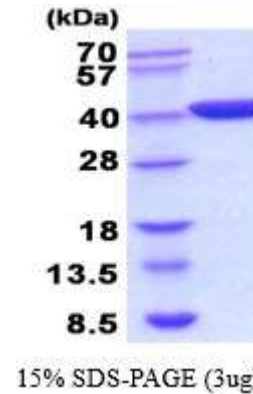


Recombinant *E. coli*, D-lactate Dehydrogenase

| | |
|-----------------------------|--|
| CATALOG NO: | P1053-10 10 µg P1053-50 50 µg |
| ALTERNATE NAMES: | ECK1377, hslF, hslI, htpH, JW1375, IdhA, |
| CONCENTRATION: | 1 mg/ml (determined by Bradford assay) |
| SOURCE: | <i>E.coli</i> expressed recombinant IdhA, protein, fused to His-tag at N-terminus (1-329aa). |
| PURITY: | > 95% by SDS-PAGE |
| MOL. WEIGHT: | This protein is fused with 6x His tag at N terminus and the protein has a calculated MW of 39.1 kDa (353aa). |
| FORM: | Liquid |
| FORMULATION: | In 20 mM Tris-HCl buffer, pH8.0, 10% glycerol, 100mM NaCl |
| STORAGE CONDITIONS: | Store at +4°C for short term (1-2 weeks). For long term storage, aliquot and store at -70°C. Avoid repeated freeze/thaw cycles. |
| SEQUENCE: | MGSSHHHHHH SSSLVPRGSH MATLKEKLI A PVAEEEEATVP NNKITVVGVG QVGMACAISI LGKSLADELA LVDVLEDKLK GEMMDLQHG S LFLQTPKIVA DKDYSVTANS KIVVVTAGVR QQEGESRLNL VQRNVNVFKF IIPQIVKYSP DCIIIVVSNP VDILTYVTWK LSGLPKHRVI GSGCNLDSAR FRYLMAEKLG IHPSSCHGWI LGEHGDSSVA VWSGVNVAGV SLQELNPEMG TDNDSENWKE VHKMVVESAY EVIKLKG YTN WAIGLSVADL IESMLKNLSR IHPVSTMVKG MYGIENEVFL SLP CILNARG LTSVINQK LK DDEVAQLKKS ADTLWDIQKD LKDL |
| DESCRIPTION: | Idha, also known as D-lactate dehydrogenase, belongs to the D-isomer specific 2-hydroxyacid dehydrogenase family. In enzymology, a D-lactate dehydrogenase (cytochrome) is an enzyme that catalyzes the chemical reaction. Thus, the two substrates of this enzyme are (D)-lactate and ferricytochrome c, whereas its two products are pyruvate and ferrocyclochrome c. Recombinant <i>E.coli</i> IdhA protein, fused to His-tag at N-terminus, was expressed in <i>E.coli</i> and purified by using conventional chromatography techniques. |
| BIOLOGICAL ACTIVITY: | Specific activity is > 200 units/mg, in which one unit will convert 1.0 umole of pyruvate to L-lactate and beta-NAD per minute at pH 7.5 at 37C. |



Recombinant *E. coli*, Fermentative D-lactate Dehydrogenase

RELATED PRODUCT:

- *E. Coli* Recombinant Thioredoxin 1 (Cat. No. 6329-50)
- *E. Coli* Recombinant TRXB (Cat. No. 6331-100)
- Human Recombinant PRDX 1 (Cat. No. 6323-100)
- Human Recombinant PRDX 2 (Cat. No. 6319-100)
- Human Recombinant PRDX 3 (Cat. No. 6320-100)
- Human Recombinant PRDX 4 (Cat. No. 6324-100)
- Human Recombinant PRDX 5 (Cat. No. 6321-100)
- Human Recombinant PRDX 6 (Cat. No. 6322-100)
- Human Recombinant Thioredoxin (Cat. No. 6305-100)
- Human Recombinant Thioredoxin 2 (Cat. No. 6318-100)
- Human Recombinant TXNRD1 (Cat. No. 6330-100)
- Thioredoxin isoform 1 (Trx), Active, Human Recombinant (Cat. No. P1039-100)

FOR RESEARCH USE ONLY! Not to be used on humans.