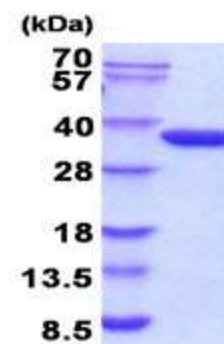


Recombinant *E. coli*, Glucokinase

CATALOG NO:	P1054-10 10 µg P1054-50 50 µg
ALTERNATE NAMES:	ECK2384, JW2385, glk
CONCENTRATION:	1 mg/ml (determined by Bradford assay)
SOURCE:	<i>E. coli</i> expressed recombinant glk, protein, fused to His-tag at N-terminus (1-321aa).
PURITY:	> 95% by SDS-PAGE
MOL. WEIGHT:	This protein is fused with 6x His tag at N terminus and the protein has a calculated MW of 37.1 kDa (344aa).
FORM:	Liquid
FORMULATION:	In 20mM Tris-HCl buffer (pH 8.0) containing 0.15M NaCl, 10% glycerol
STORAGE CONDITIONS:	Store at +4°C for short term (1-2 weeks). For long term storage, aliquot and store at -70°C. Avoid repeated freeze/thaw cycles.
SEQUENCE:	MGSSHHHHHH SSGLVPRGSH MGSMTKYALV GDVGGTNARL ALCDIASGEI SQAQTYSGLD YPSLEAVIRV YLEEHKVEVK DGCIAIACPI TGDWVAMTNH TWAFSIAEMK KNLGFSHLEI INDFTAVSMA IPMLKKEHLI QFPGAEPVEG KPIAVYGAGT GLGVAHLVHV DKRWVSLPGE GGHVDFAPNS EEEAIILEIL RAEIGHVSAE RVLSGPGLVN LYRAIVKADN RLPENLKPDK ITERALADSC TDCRRALSLF CVIMGRFGGN LALNLGTFGG VFIAGGIVPR FLEFFKASGF RAAFEDKGRF KEYVHDIPVY LIVHDNPGLL GSGAHLRQTL GHIL
DESCRIPTION:	glk belongs to the bacterial glucokinase family. This protein is not highly important in <i>E. coli</i> as glucose is transported into the cell by the PTS system already as glucose 6-phosphate. Recombinant <i>E. coli</i> glk protein, fused to His-tag at N-terminus, was expressed in <i>E. coli</i> and purified by using conventional chromatography techniques.
BIOLOGICAL ACTIVITY:	Specific activity is >70 units/mg obtained by measuring the increase of NADPH in absorbance at 340 nm resulting from the reduction of NADP. One unit will oxidize 1.0 µmole of Glucose to D-glucose 6-phosphate per minute in the presence of β-NADP at pH 9.0 at 37C.



15% SDS-PAGE (3µg)

Recombinant *E. coli* Glucokinase

RELATED PRODUCT:

- *E. Coli* Recombinant Thioredoxin 1 (Cat. No. 6329-50)
- *E. Coli* Recombinant TRXB (Cat. No. 6331-100)
- Human Recombinant PRDX 1 (Cat. No. 6323-100)
- Human Recombinant PRDX 2 (Cat. No. 6319-100)
- Human Recombinant PRDX 3 (Cat. No. 6320-100)
- Human Recombinant PRDX 4 (Cat. No. 6324-100)
- Human Recombinant PRDX 5 (Cat. No. 6321-100)
- Human Recombinant PRDX 6 (Cat. No. 6322-100)
- Human Recombinant Thioredoxin (Cat. No. 6305-100)
- Human Recombinant Thioredoxin 2 (Cat. No. 6318-100)
- Human Recombinant TXNRD1 (Cat. No. 6330-100)
- Thioredoxin isoform 1 (Trx), Active, Human Recombinant (Cat. No. P1039-100)

FOR RESEARCH USE ONLY! Not to be used on humans.