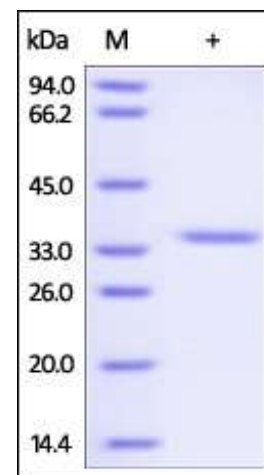


Human CellExp™ Collagen II / COL2A1, Human recombinant

CATALOG NO:	P1056-10 P1056-50	10 µg 50 µg
ALTERNATE NAMES:	COL2A1, Collagen alpha-1(II) chain, Chondrocalcin	
SOURCE:	HEK 293 cells (Asp 1173 - Leu 1418)	
PURITY:	> 95% by SDS-PAGE	
MOL. WEIGHT:	This protein is fused with polyhistidine tag at the N-terminus, and has a calculated MW of 28.2 kDa. The predicted N-terminus is Asp 1173. DTT-reduced Protein migrates as 35 kDa in SDS-PAGE due to glycosylation.	
ENDOTOXIN LEVEL:	< 1.0 EU per 1µg of protein (determined by LAL method)	
FORM:	Lyophilized	
FORMULATION:	Lyophilized from 0.22 µm filtered solution in PBS, pH7.4. Generally Mannitol or Trehalose is added as a protectant before lyophilization.	
STORAGE CONDITIONS:	Store at -70°C. After reconstitution, aliquot and store at -70°C and use within 3 months. Avoid repeated freezing and thawing cycles.	
RECONSTITUTION:	Centrifuge the vial prior to opening. Reconstitute in sterile PBS, pH 7.4 to a concentration of 50 µg/ml. Do not vortex. This solution can be stored at 2-8°C for up to 1 month. For extended storage, it is recommended to store at -70°C.	
DESCRIPTION:	Collagen alpha-1(II) chain (COL2A1) is also known as Alpha-1 type II collagen, which can be cleaved into the following 2 chains: Collagen alpha-1(II) chain and Chondrocalcin. COL2A1 belongs to the fibrillar collagen family. Type II collagen / COL2A1 is specific for cartilaginous tissues. It is essential for the normal embryonic development of the skeleton, for linear growth and for the ability of cartilage to resist compressive forces.	



The purity of rh COL2A1 was determined by DTT-reduced (+) SDS-PAGE and staining overnight with Coomassie Blue.

RELATED PRODUCT:

- Collagen-III, human recombinant (**Cat. No. 4797-1, -5**)
- Anti-Collagen-I Antibody (**Cat. No. A1121-100**)
- Collagenase Activity Colorimetric Assay Kit (**Cat. No. K792-100**)
- Collagenase Inhibitor Screening Kit (Fluorometric) (**Cat. No. K833-100**)
- Endostatin, human recombinant (**Cat. No. 4799-100, -1000**)
- Endostatin, human recombinant (**Cat. No. 4759-20, -100, -1000**)
- EZCell™ Cell Invasion Assay (Collagen I), 96-well, 8 µm (**Cat. No. K916-100**)
- EZCell™ Cell Invasion Assay (Collagen IV), 24-well, 8 µm (**Cat. No. K919-24**)
- EZCell™ Cell Invasion Assay (Collagen IV), 96-well, 8 µm (**Cat. No. K918-100**)
- EZCell™ Cell Invasion Assay Kit (Collagen I), 24-well, 8 µm (**Cat. No. K917-24**)
- Total Collagen Assay Kit (Colorimetric) (**Cat. No. K218-100**)

FOR RESEARCH USE ONLY! Not to be used on humans.