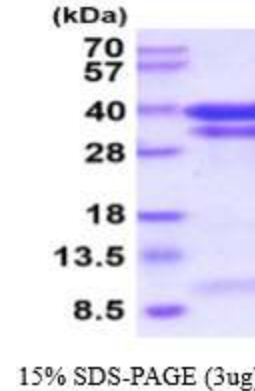


CTSB, mouse recombinant

CATALOG NO:	P1095-10	10 µg
ALTERNATE NAMES:	Cathepsin B, Ctsb, CB	
CONCENTRATION:	0.5 mg/ml (determined by Absorbance at 280nm)	
SOURCE:	CTSB recombinant protein was expressed in insect cell (Baculovirus) and fused to His-tag at C-terminus (1-330aa).	
PURITY:	> 90% by SDS-PAGE	
MOL. WEIGHT:	This protein is fused with 6x His tag at C terminus and the protein has a calculated MW of 36.4 kDa (330aa). Predicted N terminal is His18. Protein runs at 28-40 kDa in SDS-PAGE under reducing conditions.	
ENDOTOXIN LEVEL:	< 1.0 EU per 1µg of protein (determined by LAL method)	
FORM:	Liquid	
FORMULATION:	In Phosphate Buffered Saline (pH 7.4) containing 10% glycerol	
STORAGE CONDITIONS:	Store at +4°C for short term (1-2 weeks). For long term storage, aliquot and store at -70°C. Avoid repeated freeze/thaw cycles.	
SEQUENCE:	HDKPSFHPLS DDLINYINKQ NTTWQAGRNF YNVDISYLKK LCGTVLGGPK LPGRVAFGED IDLPETFDAR EQWSNCPTIG QIRDQSGCGS CWAFGAVEAI SDRTCIHTNG RVNVEVSAED LLTCCGIQCG DGCNNGGYPSG AWSFWTKKGL VSGGVYNSHV GCLPYTIPPC EHHVNGSRPP CTGEDTPRC NKSCEAGYSP SYKEDKHFY TSYSVSNSVK EIMAEIYKNG PVEGAFTVFS DFLTYKSGVY KHEAGDMMGG HAIRILGWGV ENGVPYWLAA NSWNLDWGDN GFFKILRGEN HCGIESEIVA GIPRTDQYWG RFLEHHHHHH	
DESCRIPTION:	CTSB, also known as cathepsin B preproprotein, is a papain-family cysteine protease that is normally located in lysosomes. It has the ability to degrade several extracellular matrix components at both neutral and acidic pH and has been implicated in the progression of several human and rodent tumors progression and arthritis. Recombinant mouse CTSB, fused to His-tag at C-terminus, was expressed in insect cell and purified by using conventional chromatography techniques.	
BIOLOGICAL ACTIVITY:	Specific activity is >2,000 pmol/min/ug and is defined as the amount of enzyme that hydrolyze 1pmole of Z-Arg-Arg-AMC to Z-Arg-Arg and AMC per minute at pH 6.0 at 37C.	



Mouse recombinant CTSB

RELATED PRODUCT:

- CSTB, human recombinant (**Cat. No. 9235-10**)
- CST6, human recombinant (**Cat. No. 9234-10**)
- Cathepsin B, Active, human recombinant (**Cat. No. 7580-50**)
- Cathepsin D, Active, human recombinant (**Cat. No. 9229-50**)
- Cathepsin K, Active, human recombinant (**Cat. No. 7600-50**)
- Cathepsin L, human recombinant (**Cat. No. 1135-100**)
- Cathepsin S, Active, human recombinant (**Cat. No. 7526-50**)
- Human CellExp™ Cathepsin B, human recombinant (**Cat. No. 7408-10**)
- Human CellExp™ Cathepsin D, human recombinant (**Cat. No. 7409-10**)
- Human CellExp™ Cathepsin L1, human recombinant (**Cat. No. 7410-10**)
- Human CellExp™ Cathepsin S, human recombinant (**Cat. No. 7277-10**)
- Cathepsin D Activity Fluorometric Assay Kit (**Cat. No. K143-100**)
- Cathepsin B Activity Fluorometric Assay Kit (**Cat. No. K140-100**)

FOR RESEARCH USE ONLY! Not to be used on humans.