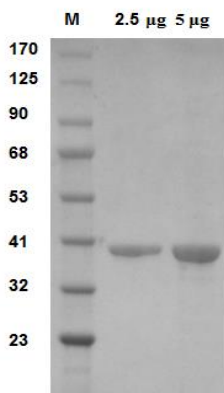


GAPDH, Active, human recombinant

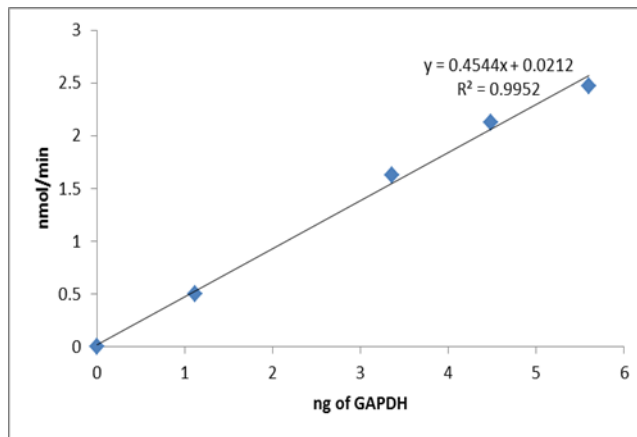
CATALOG NO:	P1100-10 10 µg P1100-50 50 µg
ALTERNATE NAMES:	Glyceraldehyde-3-phosphate dehydrogenase, G3PD, GAPD
MOL. WT.	38.2 kDa (N-Terminal His-Tag)
SOURCE:	<i>E. Coli</i>
PURITY:	≥95% SDS-PAGE
FORM:	Lyophilized
FORMULATION:	Lyophilized with proprietary buffer
RECONSTITUTION:	Reconstitute in 50 mM Hepes and 10% glycerol to a final concentration of 1 mg/ml.
SPECIFIC ACTIVITY:	Specific activity is ≥ 100 U/mg when assayed in 100 mM Hepes pH 8.0, 10 mM NaH ₂ PO ₄ , 0.1% NP-40 at 37°C for 30 minutes.
UNIT DEFINITION:	One unit of GAPDH is the amount of enzyme that will catalyze 1 µmole of glyceraldehyde-3-phosphate to 1,3-bisphosphoglycerate at pH 8.0 and 37°C.
STORAGE CONDITIONS:	Store at -20°C. The reconstituted enzyme can be stored at 4°C short term (1-2 weeks). For long term storage, aliquot and store at -20°C or -70°C for up to two years. Avoid repeated freeze and thaw cycles.
DESCRIPTION:	Glyceraldehyde dehydrogenase converts glyceraldehyde-3-phosphate to 1,3-bisphosphoglycerate during glycolysis. The enzyme is involved in different cellular processes such as apoptosis, membrane trafficking, iron metabolism and nuclear translocation. GAPDH expression is stable and constitutive. Deregulation of GAPDH activity is associated with abnormal cell proliferation and carcinogenesis.
AMINO ACID SEQUENCE:	aa 1-335



Gentaur Europe BVBA Voortstraat 49, 1910 Kampenhout BELGIUM
Tel 0032 16 58 90 45 info@gentaur.com



SDS-PAGE (4-20%) recombinant GAPDH: Recombinant protein loaded under reducing conditions and stained with Coomassie Blue. Lane M-MW marker, Lanes 2-3 Glyceraldehyde Dehydrogenase.



Enzyme Activity Assay: The activity of the enzyme is 100 U/mg. The enzyme's activity was assayed in 100 mM Hepes pH 8.0, 10 mM NaH₂PO₄, and 0.1% NP-40 at 37°C for 30 minutes.

RELATED PRODUCTS:

- PicoProbe™ Fructose Fluorometric Assay Kit (K611)
- PicoProbe™ Glucose-6-Phosphate Fluorometric Assay Kit (K687)
- GAPDH Activity Assay Kit (K680)
- PicoProbe™ Fructose-6-Phosphate Fluorometric Assay Kit (K689)

FOR RESEARCH USE ONLY! Not to be used on humans.

Gentaur Europe BVBA Voorstraat 49, 1910 Kampenhout BELGIUM
Tel 0032 16 58 90 45 info@gentaur.com

