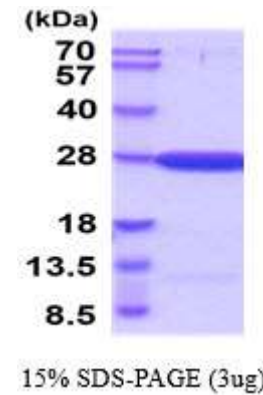


## Guanylate kinase, human recombinant

<b>CATALOG NO:</b>	P1101-10      10 µg P1101-50      50 µg
<b>ALTERNATE NAMES:</b>	GMK, GMP kinase, Guanylate kinase
<b>CONCENTRATION:</b>	1 mg/ml (determined by Bradford assay)
<b>SOURCE:</b>	<i>E.coli</i> expressed Guanylate kinase recombinant protein and fused to His-tag at N-terminus (1-217aa), confirmed by MALDI-TOF
<b>PURITY:</b>	> 90% by SDS-PAGE
<b>MOL. WEIGHT:</b>	This protein is fused with 6x His tag at C terminus and the protein has a calculated MW of 23.9 kDa (217aa).
<b>FORM:</b>	Liquid
<b>FORMULATION:</b>	In Phosphate Buffered Saline (pH 7.4) containing 10% glycerol
<b>STORAGE CONDITIONS:</b>	Store at +4°C for short term (1-2 weeks). For long term storage, aliquot and store at -70°C. Avoid repeated freeze/thaw cycles.
<b>SEQUENCE:</b>	MGSSHHHHH SSGLVPRGSH MSGPRPVVLS GPSGAGKSTL LKRLLQEHSG IFGFSVSHTT RNPRPGEENG KDYYFVTREV MQRDIAAGDF IEHAEFSGNL YGTSKVAVQA VQAMNRCIVL DVDLQGVVNI KATDLRPIYI SVQPPSLHVL EQRLRQRNTE TEESLVKRLA AAQADMESSK EPGLFDVVII NDSLDAQYAE LKEALSEEIK KAQRTGA
<b>DESCRIPTION:</b>	GUK1, also known as GMK, belongs to the guanylate kinase family. This protein exists as a monomer that catalyzes the ATP-dependent conversion of GMP to GDP, thereby playing an essential role in the recycling of GMP. Via its catalytic activity, GUK1 is thought to participate in regulating the supply of guanine nucleotides to signal transduction pathways. Overexpression of GUK1 is associated with pituitary adenocarcinomas, suggesting that GUK1 is involved in tumorigenesis. Recombinant human GUK1 protein, fused to His-tag at N-terminus, was expressed in <i>E.coli</i> and purified by using conventional chromatography techniques
<b>BIOLOGICAL ACTIVITY:</b>	Specific activity is >100 units/mg and is defined as the amount of enzyme that convert 1.0 umole of GMP and ATP to GDP and ADP per minute at pH 7.5 at 37C in coupled system with PK/LDH.



Human recombinant Guanylate kinase

### RELATED PRODUCT:

- CSTB, human recombinant (**Cat. No. 9235-10**)
- CST6, human recombinant (**Cat. No. 9234-10**)
- Cathepsin B, Active, human recombinant (**Cat. No. 7580-50**)
- Cathepsin D, Active, human recombinant (**Cat. No. 9229-50**)
- Cathepsin K, Active, human recombinant (**Cat. No. 7600-50**)
- Cathepsin L, human recombinant (**Cat. No. 1135-100**)
- Cathepsin S, Active, human recombinant (**Cat. No. 7526-50**)
- Human CellExp™ Cathepsin B, human recombinant (**Cat. No. 7408-10**)
- Human CellExp™ Cathepsin D, human recombinant (**Cat. No. 7409-10**)
- Human CellExp™ Cathepsin L1, human recombinant (**Cat. No. 7410-10**)
- Human CellExp™ Cathepsin S, human recombinant (**Cat. No. 7277-10**)
- Cathepsin D Activity Fluorometric Assay Kit (**Cat. No. K143-100**)
- Cathepsin B Activity Fluorometric Assay Kit (**Cat. No. K140-100**)

**FOR RESEARCH USE ONLY! Not to be used on humans.**