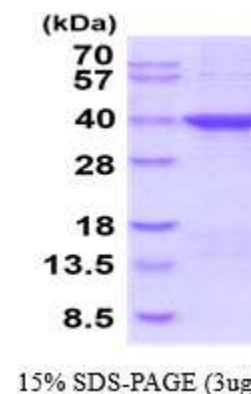


Monoglyceride lipase, human recombinant

CATALOG NO:	P1102-10	10 µg
ALTERNATE NAMES:	MLL, HU-K5, HUK5, MAGL, MGL, Lysophospholipase homolog, Lysophospholipase-like	
CONCENTRATION:	0.5 mg/ml (determined by Bradford assay)	
SOURCE:	Monoglyceride lipase recombinant protein was expressed in <i>E.coli</i> and fused to His-tag at N-terminus (1-313aa)	
PURITY:	> 85% by SDS-PAGE	
MOL. WEIGHT:	This protein is fused with 6x His tag at N terminus and the protein has a calculated MW of 36.4 kDa (333aa), confirmed by MALDI-TOF	
FORM:	Liquid	
FORMULATION:	In 20 mM Tris-HCl Buffer (pH 8.0) containing 10% Glycerol	
STORAGE CONDITIONS:	Store at +4°C for short term (1-2 weeks). For long term storage, aliquot and store at -70°C. Avoid repeated freeze/thaw cycles.	
SEQUENCE:	<p>MGSSHHHHHH SSGLVPRGSH METGPEDPSS MPEESSPRRT PQSIPYQDLP HLVNADGQYL FCRYWKPTGT PKALIFVSHG AGEHSGRYEE LARMLMGLDL LVFAHDHVGH GQSEGERMVV SDFHVFVRDV LQHVDSMQKD YPGLPVFLG HSMGGAIIL TAAERPGHFA GMVLISPLVL ANPESATTFK VLAAKVLNLV LPNLSLGPID SSVLSRNKTE VDIYNSDPLI CRAGLKVCFG IQLLNAVSRV ERALPKLTVP FLLLQGSADR LCDSKGAYLL MELAKSQDKT LKIYEGAYHV LHKELPEVTN SVFHEINMWV SQRTATAGTA SPP</p>	
DESCRIPTION:	<p>MGLL is membrane-associated member of the serine hydrolase superfamily. MGLL functions together with hormone-sensitive lipase (LIPE) to hydrolyze intracellular triglyceride stores in adipocytes and other cells to fatty acids and glycerol. MGLL may also complement lipoprotein lipase (LPL) in completing hydrolysis of monoglycerides resulting from degradation of lipoprotein triglycerides. It is most abundantly expressed in skeletal muscle and adipose tissue. Recombinant human MGLL protein, fused to His-tag at N-terminus, was expressed in <i>E.coli</i> and purified by using conventional chromatography.</p>	
BIOLOGICAL ACTIVITY:	Specific activity is > 170 units/mg, and is defined as the amount of enzyme that hydrolyze 1.0 umole of p-nitrophenyl butyrate to p-nitrophenol per minute at pH 7.5 at 25C.	



Human recombinant Monoglyceride lipase

RELATED PRODUCT:

- MLL1 Polyclonal Antibody (Cat. No. 3798-100)
- Human CellExp™ LDLR, human recombinant (Cat. No. 7472-10)
- Human CellExp™ Lipocalin-2 / LCN2, human recombinant (Cat. No. 7460-50)
- Human CellExp™ Lipocalin-2 / LCN2, mouse recombinant (Cat. No. 7568-50)

FOR RESEARCH USE ONLY! Not to be used on humans.