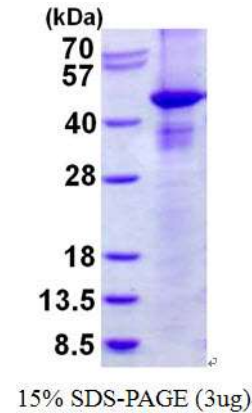


## RASSF1A, human recombinant

<b>CATALOG NO:</b>	P1114-20      20 µg P1114-100      100 µg
<b>ALTERNATE NAMES:</b>	Ras association domain-containing protein 1, 123F2, NORE2A, RASSF1, RDA32, REH3P21
<b>CONCENTRATION:</b>	1 mg/ml (determined by Bradford assay)
<b>SOURCE:</b>	RASSF1A recombinant protein was expressed in <i>E.coli</i> and fused to His-tag at N-terminus (1-340aa).
<b>PURITY:</b>	> 85% by SDS-PAGE
<b>MOL. WEIGHT:</b>	This protein is fused with 6x His tag at N terminus and the protein has a calculated MW of 42.9 kDa (376aa)
<b>FORM:</b>	Liquid
<b>FORMULATION:</b>	In 20mM Tris-HCl buffer (pH 8.0) containing 0.4M Urea, 10% glycerol
<b>STORAGE CONDITIONS:</b>	Store at +4°C for short term (1-2 weeks). For long term storage, aliquot and store at -70°C. Avoid repeated freeze/thaw cycles.
<b>SEQUENCE:</b>	MRGSHHHHHH      GMASMTGGQQ      MGRDLYDDDD KDRWGSMSGE    PELIELRELA    PAGRAGKGR    RLERANALRI ARGTACNPTR    QLVPGRGHRF    QPAGPATHTW    CDLCGDFIWG VVRKGLQCAH    CKFTCHYRCR    ALVCLDCCGP    RDLGWEPAVE RDTNVDEPVE    WETPDLSQAE    IEQKIKEYNA    QINSNLFMSL NKDGSYTGFI    KVQLKLVRPV    SVPSSKKPPS    LQDARRGPGR GTSVRRRTSF    YLPKDAVKHL    HVLSRTRARE    VIEALLRKFL VVDDPRKFAL    FERAERHGQV    YLRKLLDDEQ    PLRLRLLAGP SDKALSFLVK    ENDSGEVNWD    AFMPPELHNF    LRILQREEEE HLRQILQKYS    YCRQKIQEAL    HACPLG
<b>DESCRIPTION:</b>	RASSF1A is similar to the RAS effector proteins. Loss or altered expression of this gene has been associated with the pathogenesis of a variety of cancers, which suggests the tumor suppressor function of this gene. The inactivation of this gene was found to be correlated with the hypermethylation of its CpG-island promoter region. This protein required for death receptor-dependent apoptosis. Recombinant human RASSF1A protein, fused to His-tag at N-terminus, was expressed in <i>E.coli</i> .



Human recombinant RASSF1A

### RELATED PRODUCT:

- CSTB, human recombinant (**Cat. No. 9235-10**)
- CST6, human recombinant (**Cat. No. 9234-10**)
- Cathepsin B, Active, human recombinant (**Cat. No. 7580-50**)
- Cathepsin D, Active, human recombinant (**Cat. No. 9229-50**)
- Cathepsin K, Active, human recombinant (**Cat. No. 7600-50**)
- Cathepsin L, human recombinant (**Cat. No. 1135-100**)
- Cathepsin S, Active, human recombinant (**Cat. No. 7526-50**)
- Human CellExp™ Cathepsin B, human recombinant (**Cat. No. 7408-10**)
- Human CellExp™ Cathepsin D, human recombinant (**Cat. No. 7409-10**)
- Human CellExp™ Cathepsin L1, human recombinant (**Cat. No. 7410-10**)
- Human CellExp™ Cathepsin S, human recombinant (**Cat. No. 7277-10**)

**FOR RESEARCH USE ONLY! Not to be used on humans.**