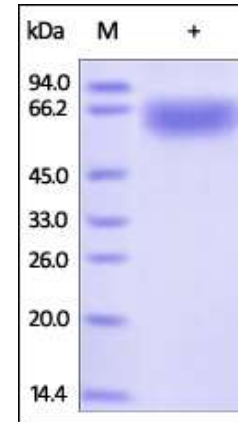


Human CellExp™ CNDP1, Human recombinant

CATALOG NO:	P1125-10 P1125-50	10 µg 50 µg
ALTERNATE NAMES:	CNDP1, CN1, CPGL2	
SOURCE:	HEK 293 cells (Ser 28 - His 508)	
PURITY:	> 95% by SDS – PAGE	
MOL. WEIGHT:	rh CNDP1, fused with 6xHis tag at the C-terminus, has a calculated MW of 54.7 kDa. The predicted N-terminus is Ser 28. DTT-reduced Protein migrates as 60-66 kDa due to glycosylation.	
ENDOTOXIN LEVEL:	< 1.0 EU per 1µg of protein (determined by LAL method)	
FORM:	Lyophilized	
FORMULATION:	Lyophilized from 0.22 µm filtered solution in PBS, pH7.4. Generally Mannitol or Trehalose is added as a protectant before lyophilization.	
STORAGE CONDITIONS:	Store at -20°C. After reconstitution, aliquot and store at -20°C and use within 3 months. Avoid repeated freezing and thawing cycles.	
RECONSTITUTION:	Centrifuge the vial prior to opening. Reconstitute in sterile deionized water to a concentration of 50 µg/ml. Solubilize for 30 to 60 minutes at room temperature with occasional gentle mixing. Carrier protein (0.1% (W/V) HSA or BSA) is recommended for further dilution and long term storage. Do not vortex. This solution can be stored at 2-8°C for up to 1 month. For extended storage, it is recommended to store at -80°C.	
DESCRIPTION:	Beta-Ala-His dipeptidase is also known as Carnosine dipeptidase 1 (CNDP1), CNDP dipeptidase 1, Glutamate carboxypeptidase-like protein 2, Serum carnosinase, CPGL2, which belongs to the peptidase M20A family. CNDP1 is found in serum and adult nervous central system. CNDP1 preferential hydrolysis of the beta-Ala- -His dipeptide (carnosine), and also anserine, Xaa- -His dipeptides and other dipeptides including homocarnosine. The catalytic activity of CNDP1 is inhibited by the metal chelator 1,10-o-phenantroline and the inhibitory concentration 50% (IC50) is 5 µM.	



The purity of rh CNDP1 was determined by DTT-reduced (+) SDS-PAGE and staining overnight with Coomassie Blue.

RELATED PRODUCT:

- Human CellExp™ CCL6, mouse recombinant (**Cat. No. 7226-10, -50**)
- Human CellExp™ CD155, human recombinant (**Cat. No. 7462-10, -50**)
- Human CellExp™ CD160/BY55, human recombinant (**Cat. No. 7386-10, -50**)
- Human CellExp™ CD166/ ALCAM, human recombinant (**Cat. No. 7437-10, -50**)
- Human CellExp™ CD172A / SIRP, human recombinant (**Cat. No. 7506-10, -50**)
- Human CellExp™ CD33 / SIGLEC-3, human recombinant (**Cat. No. 7370-10, -50**)
- Human CellExp™ CD47, human recombinant (**Cat. No. 7385-10, -50**)
- Human CellExp™ CD55/DAF, human recombinant (**Cat. No. 7432-10, -50**)
- Human CellExp™ CD58 /LFA-3, human recombinant (**Cat. No. 7427-10, -50**)
- Human CellExp™ CD62E/E-Selectin, human recombinant (**Cat. No. 7434-20, -100**)
- Human CellExp™ CD71 / TFR / TFR, human recombinant (**Cat. No. 7279-10, -50**)
- Human CellExp™ CD273, human recombinant (**Cat. No. 7369-10, -50**)
- Human CellExp™ CD36, human recombinant (**Cat. No. 7371-10, -50**)
- Human CellExp™ CD87, human recombinant (**Cat. No. 7372-20, -100**)

FOR RESEARCH USE ONLY! Not to be used on humans.