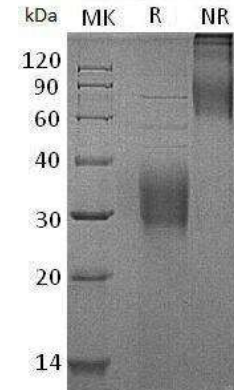


Human CellExp™ TROP-2 / TACSTD2, Human recombinant

CATALOG NO:	P1132-20 20 µg P1132-100 100 µg
ALTERNATE NAMES:	TACSTD2, GA733-1, M1S1, TROP2
SOURCE:	HEK 293 cells (Thr 88 – Thr 274)
PURITY:	> 90% by SDS – PAGE
MOL. WEIGHT:	rh TACSTD2 /TROP2, fused with polyhistidine tag at the C-terminus. The predicted N-terminus is Thr 88.
ENDOTOXIN LEVEL:	< 1.0 EU per 1µg of protein (determined by LAL method)
FORM:	Lyophilized
FORMULATION:	Lyophilized from 0.22 µm filtered solution in PBS, pH 7.4.
STORAGE CONDITIONS:	Store at -20°C. After reconstitution, aliquot and store at -70°C and use within 3 months. Avoid repeated freezing and thawing cycles.
RECONSTITUTION:	Always centrifuge tubes before opening. Do not mix by vortex or pipetting. It is not recommended to reconstitute to a concentration less than 100µg/ml. Dissolve the lyophilized protein in distilled water. Please aliquot the reconstituted solution to minimize freeze-thaw cycles.
DESCRIPTION:	Tumor-associated calcium signal transducer 2 (TACSTD2) is also known as Cell surface glycoprotein Trop-2, Membrane component chromosome 1 surface marker 1 (M1S1), Pancreatic carcinoma marker protein GA733-1, which belongs to the EPCAM family. TACSTD2 contains one thyroglobulin type-1 domain. TACSTD2 is a carcinoma-associated antigen defined by the monoclonal antibody GA733. TACSTD2 transduces an intracellular calcium signal and acts as a cell surface receptor. Mutations of TACSTD2 result in gelatinous drop-like corneal dystrophy, an autosomal recessive disorder characterized by severe corneal amyloidosis leading to blindness.



Recombinant human TROP2

RELATED PRODUCT:

- Human CellExp™ CCL6, mouse recombinant (Cat. No. 7226-10, -50)
- Human CellExp™ CD155, human recombinant (Cat. No. 7462-10, -50)
- Human CellExp™ CD160/BY55, human recombinant (Cat. No. 7386-10, -50)
- Human CellExp™ CD166/ ALCAM, human recombinant (Cat. No. 7437-10, -50)
- Human CellExp™ CD172A / SIRP, human recombinant (Cat. No. 7506-10, -50)
- Human CellExp™ CD33 / SIGLEC-3, human recombinant (Cat. No. 7370-10, -50)
- Human CellExp™ CD47, human recombinant (Cat. No. 7385-10, -50)
- Human CellExp™ CD55/DAF, human recombinant (Cat. No. 7432-10, -50)
- Human CellExp™ CD58 /LFA-3, human recombinant (Cat. No. 7427-10, -50)
- Human CellExp™ CD62E/E-Selectin, human recombinant (Cat. No. 7434-20, -100)
- Human CellExp™ CD71 / TFRC / TFR, human recombinant (Cat. No. 7279-10, -50)
- Human CellExp™ CD273, human recombinant (Cat. No. 7369-10, -50)
- Human CellExp™ CD36, human recombinant (Cat. No. 7371-10, -50)
- Human CellExp™ CD87, human recombinant (Cat. No. 7372-20, -100)

FOR RESEARCH USE ONLY! Not to be used on humans.